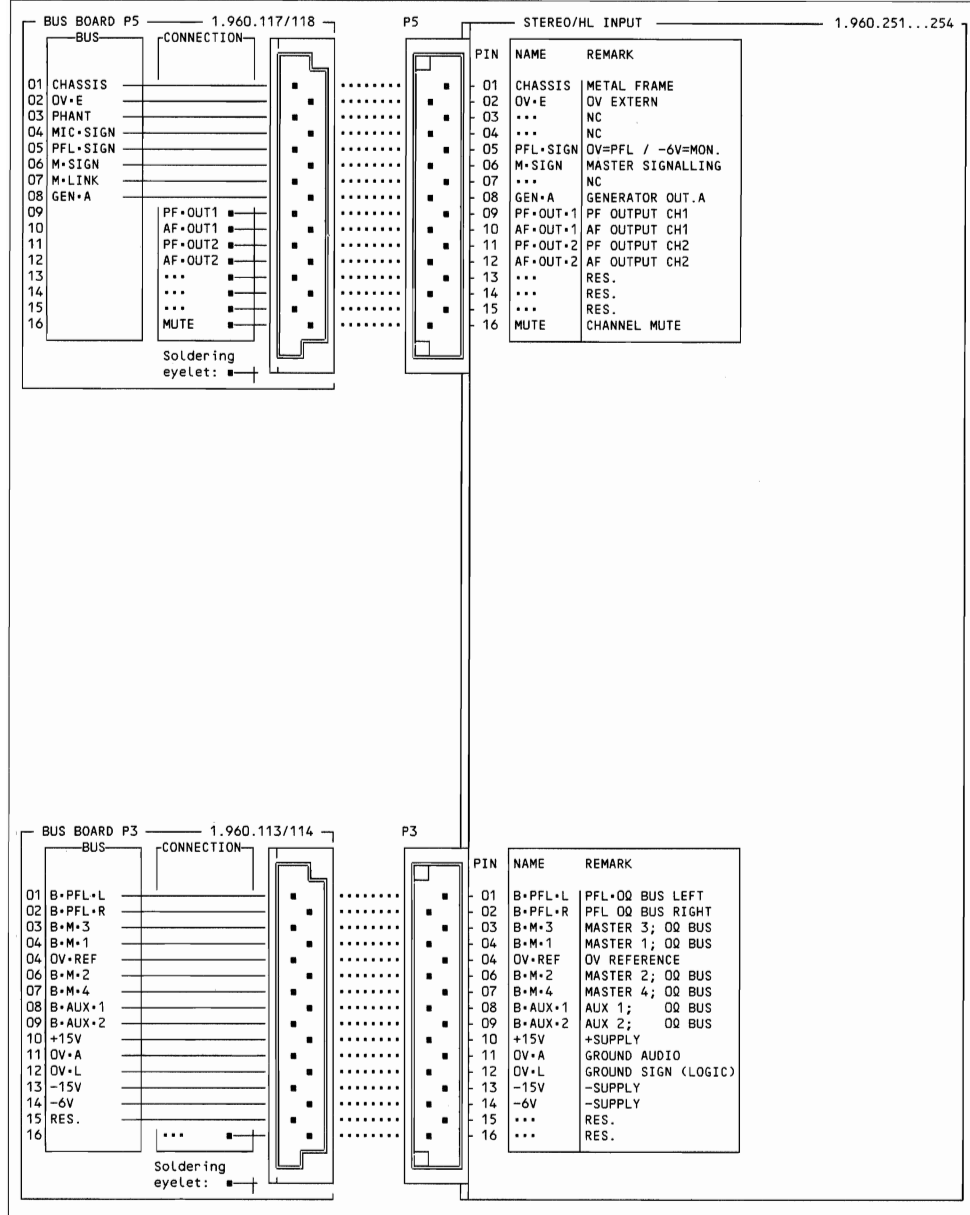


STEREO-/HOCHPEGEL-EINGANGSEINHEIT	2CH	1.960.251	STEREO/HIGH LEVEL INPUT UNIT	2CH	1.960.251
MIT EQUALIZER	2CH	1.960.252	WITH EQUALIZER	2CH	1.960.252
	4CH	1.960.253		4CH	1.960.253
MIT EQUALIZER	4CH	1.960.254	WITH EQUALIZER	4CH	1.960.254

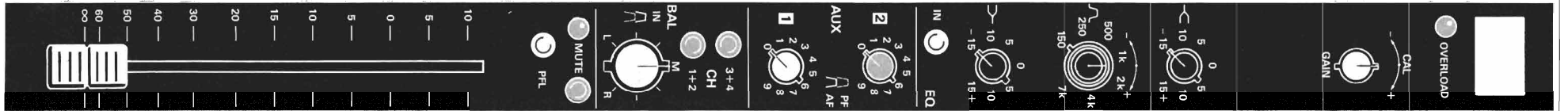


PIN	NAME	REMARK
01	CHASSIS	METAL FRAME
02	OV-E	OV EXTERN
03	...	NC
04	...	NC
05	PFL-SIGN	OV=PFL / -6V=MON.
06	M-SIGN	MASTER SIGNALLING
07	...	NC
08	GEN-A	GENERATOR OUT. A
09	PF-OUT.1	PF OUTPUT CH1
10	AF-OUT.1	AF OUTPUT CH1
11	PF-OUT.2	PF OUTPUT CH2
12	AF-OUT.2	AF OUTPUT CH2
13	...	RES.
14	...	RES.
15	...	RES.
16	MUTE	CHANNEL MUTE

PIN	NAME	REMARK
01	B-PFL-L	PFL-O0 BUS LEFT
02	B-PFL-R	PFL-O0 BUS RIGHT
03	B-M-3	MASTER 3; O0 BUS
04	B-M-1	MASTER 1; O0 BUS
04	OV-REF	OV REFERENCE
06	B-M-2	MASTER 2; O0 BUS
07	B-M-4	MASTER 4; O0 BUS
08	B-AUX-1	AUX 1; O0 BUS
09	B-AUX-2	AUX 2; O0 BUS
10	+15V	+SUPPLY
11	OV-A	GROUND AUDIO
12	OV-L	GROUND SIGN (LOGIC)
13	-15V	-SUPPLY
14	-6V	-SUPPLY
15	...	RES.
16	...	RES.

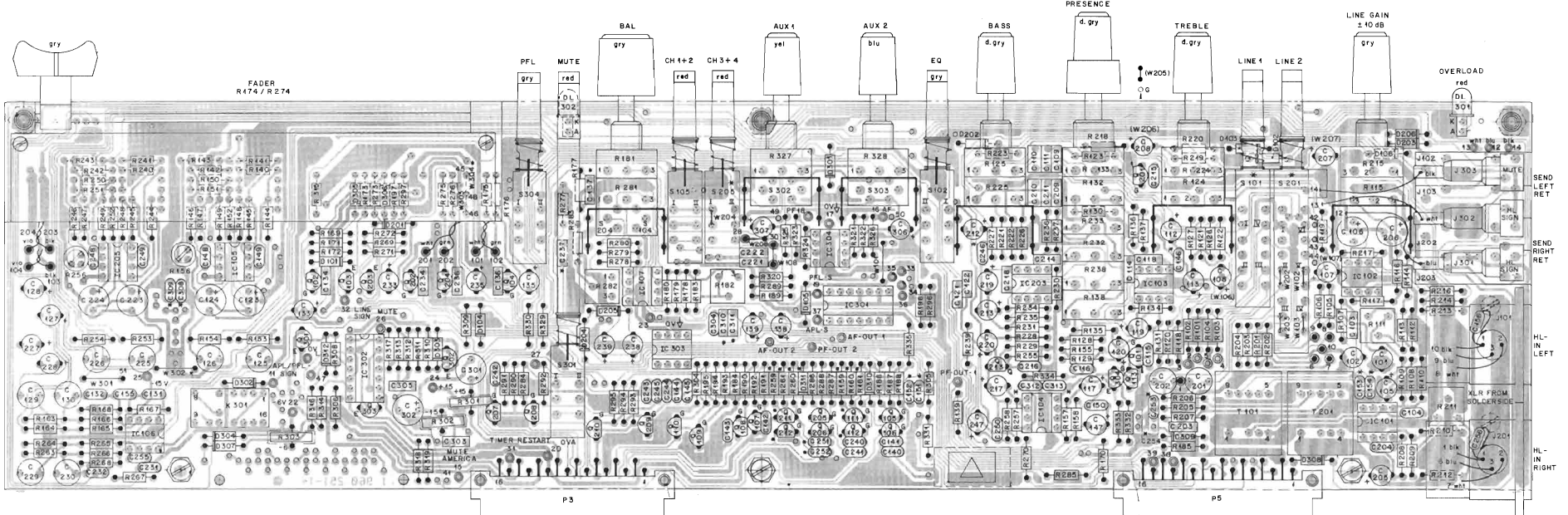
STEREO HL INPUT UNIT

- 1.960.251-83
- 1.960.252-83
- 1.960.253-83
- 1.960.254-83



SWITCHES, PLUGS,
POTENTIOMETERS,
COMBINATIONS
(without knobs
& push buttons)
* OPTION

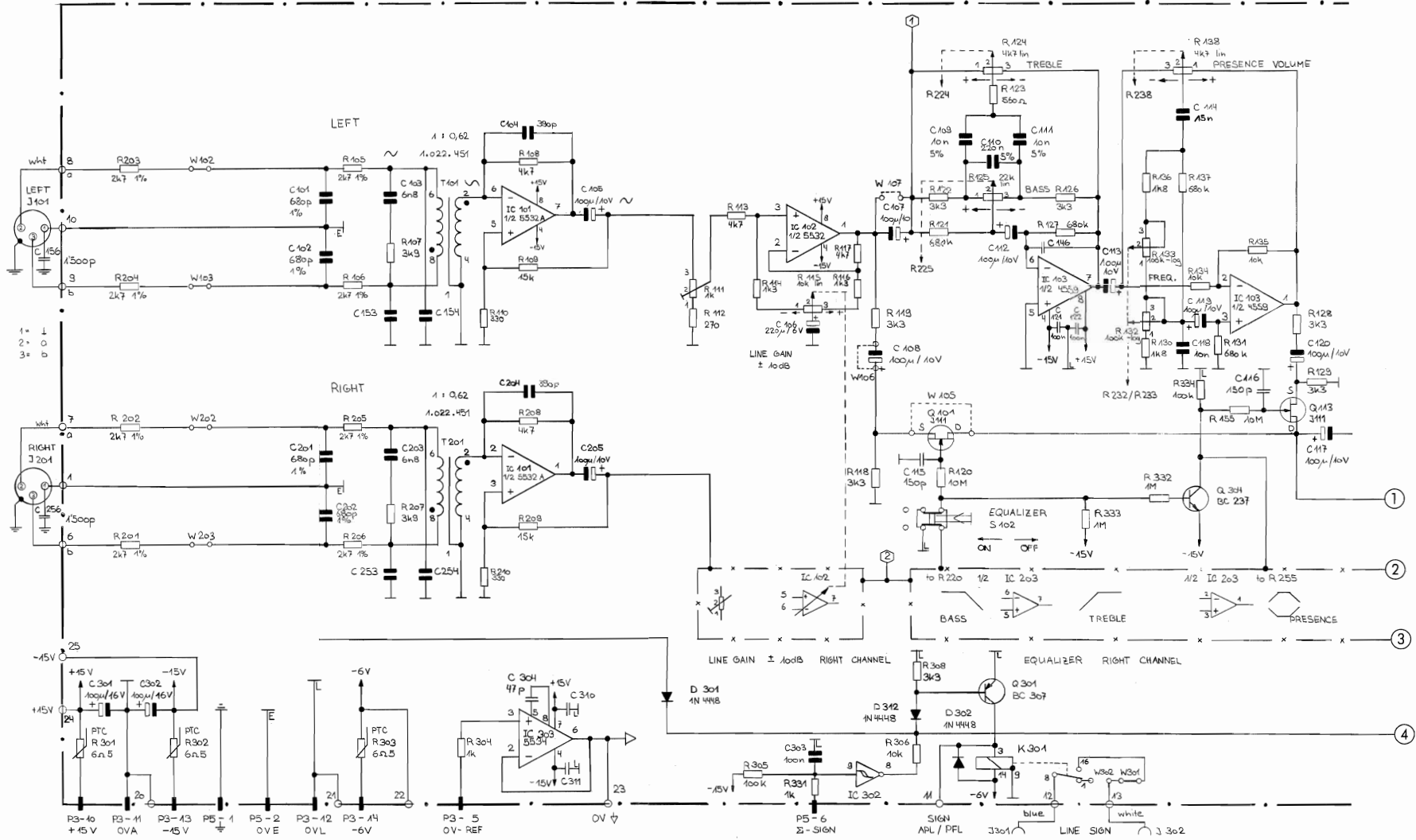
- 1.010.007.58 >
- * 55.15.0019 >
- * 55.15.0019 >
- 1.010.018.58 >
- 1.010.016.58 >
- 1.010.017.58 >
- 55.15.0019 >
- 1.369.150.03 >
- 55.15.0019 >
- 55.15.0019 >
- 1.010.019.58 >
- 55.15.0019 >
- 55.15.0019 >
- 1.960.012.00 >



STEREO HL INPUT UNIT

1.960.251-83
1.960.252-83
1.960.253-83
1.960.254-83

PART 1



① 17.10.83	② PRINT -13	④ PRINT -14
STUDER	STEREO HL INPUT UNIT	SC 1.960.251.83

STEREO HL INPUT UNIT

1.960.251-83
1.960.252-83
1.960.253-83
1.960.254-83

Table with columns: AD, POS., REF.No., DESCRIPTION, MANUFACTURE. Contains component list for the left stereo channel.

Table with columns: AD, POS., REF.No., DESCRIPTION, MANUFACTURE. Contains component list for the right stereo channel.

Table with columns: AD, POS., REF.No., DESCRIPTION, MANUFACTURE. Contains component list for the left stereo channel.

Table with columns: AD, POS., REF.No., DESCRIPTION, MANUFACTURE. Contains component list for the right stereo channel.

Table with columns: AD, POS., REF.No., DESCRIPTION, MANUFACTURE. Contains component list for the right stereo channel.

***only 2 Ck with EQ 1.960.252.83
***only 4 Ck with EQ 1.960.254.83
option 1: state OptionListe
option 2: state OptionListe
option 3: state OptionListe

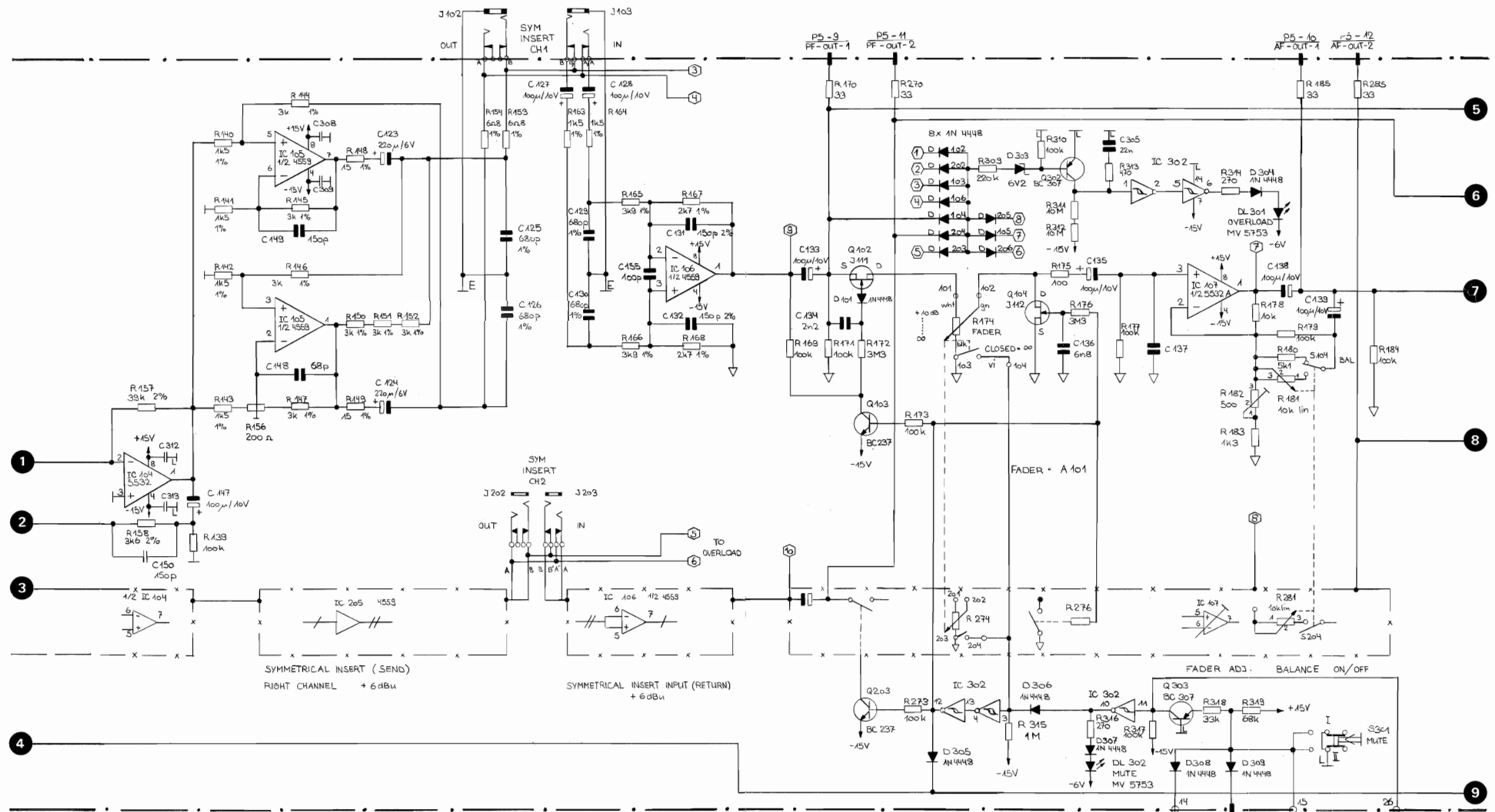
ATTENTION !!!
- version -00 print index -11,-12
- version -01 print index -12
- version -02 print index -13
- version -03 print index -13,-14
- version -04 print index -13,-14

CE-Ceramic, CF-Carbon Film, EL-Electrolytic, MF-Metal Film,
P-Polyester, PE-Polypropylene, PP-Polypropylene,
MANUFACTURER: Bz-Bornedry, Ex-Excar, Fez-FeAl3O3, G-General Instrument
M-Meltec Packard, ITT-Intertell, M-Metrolabs, Mat-National
N-Nichicon, N-Semiconductors, P-Panasonic,
R-Rohm, S-Signetics, Si-Siliconix, St-Studer,
T-Texas Instrument

STEREO HL INPUT UNIT

1.960.251-83
1.960.252-83
1.960.253-83
1.960.254-83

PART 2



SYMMETRICAL INSERT (SEND)
RIGHT CHANNEL +6dBu

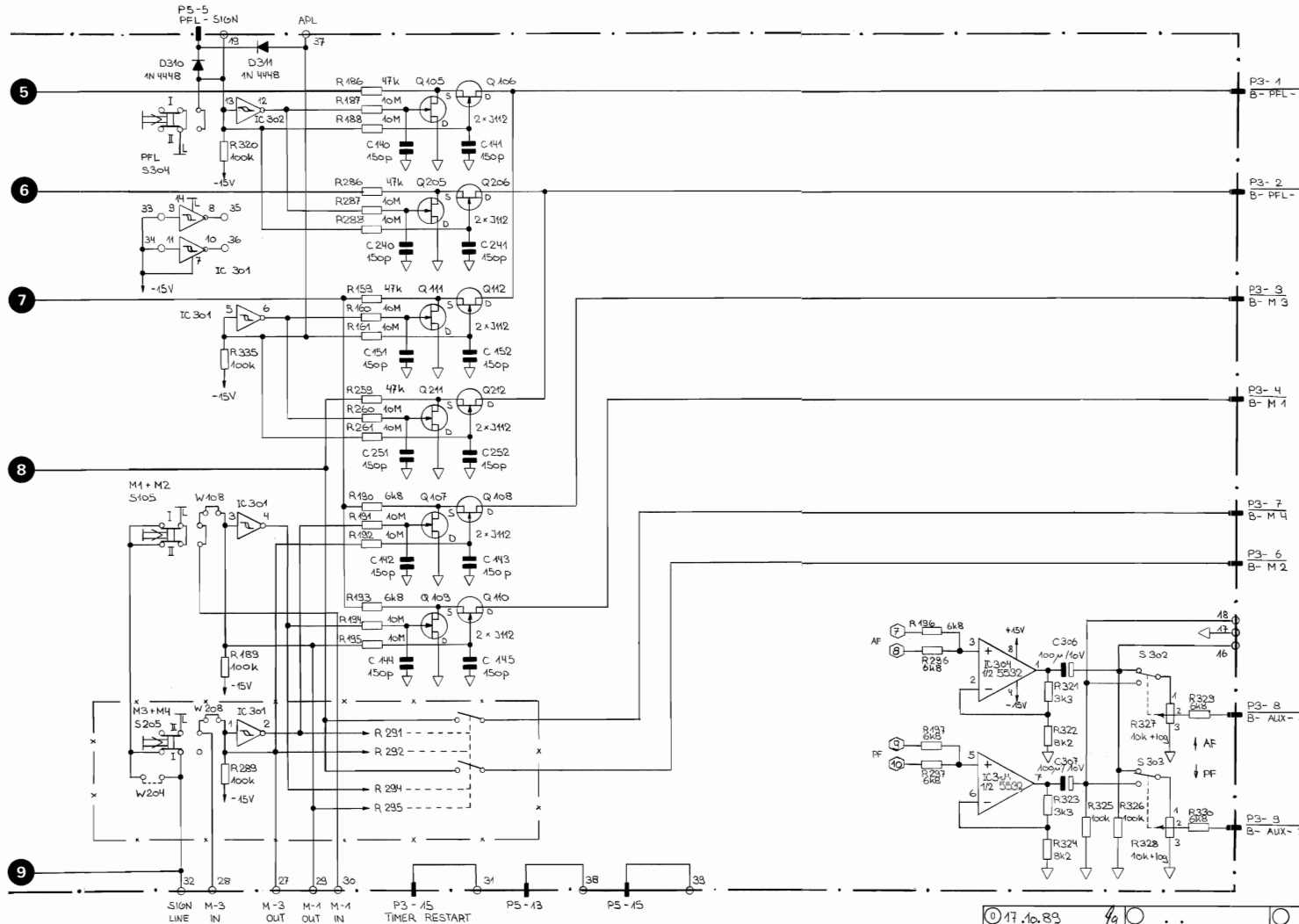
SYMMETRICAL INSERT INPUT (RETURN)
+6dBu

① 17.10.83	② PRINT -13, ① PRINT -14	SC 1.960.251.83
STUDER STEREO HL INPUT UNIT		

STEREO HL INPUT UNIT

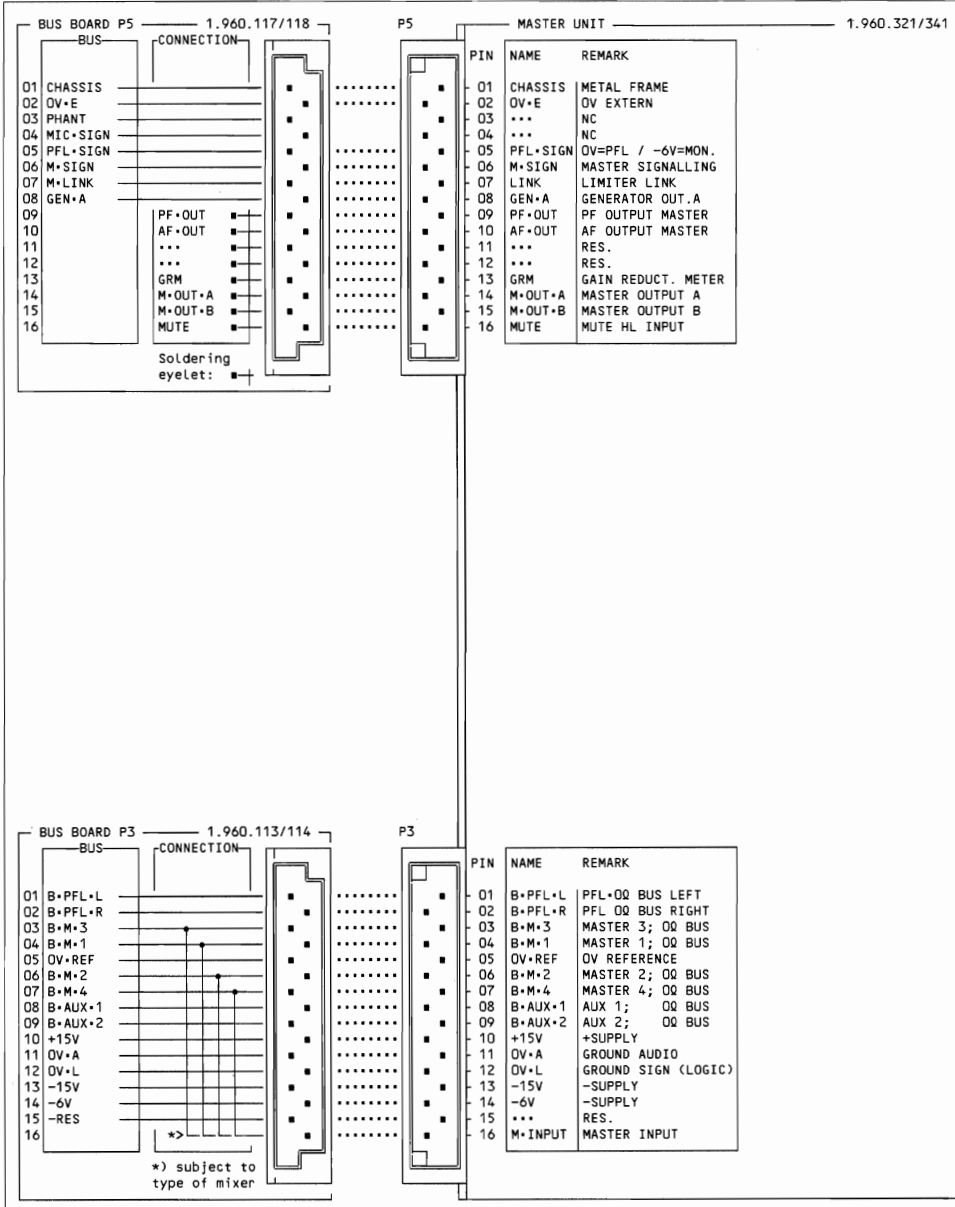
1.960.251-83
 1.960.252-83
 1.960.253-83
 1.960.254-83

PART 3

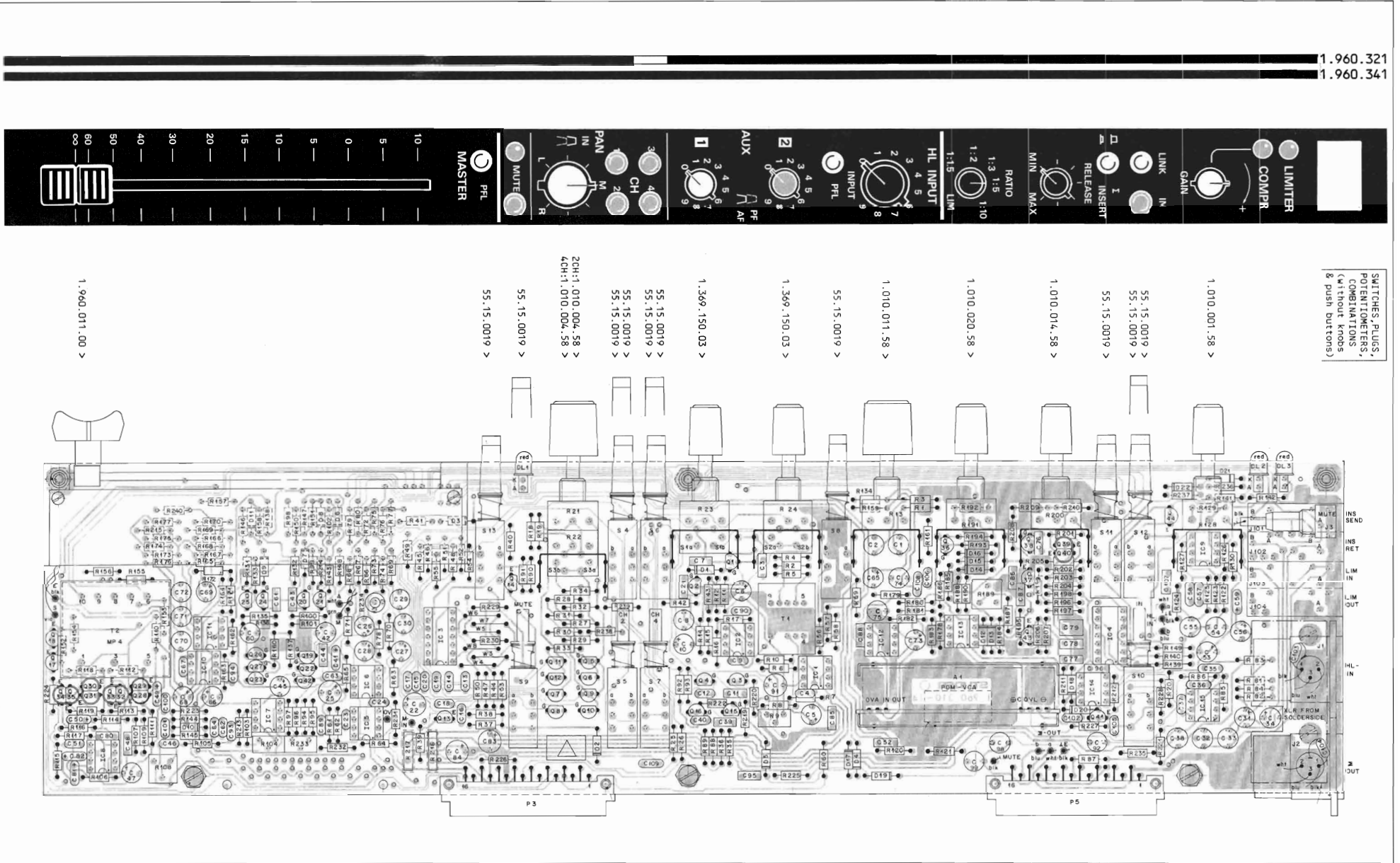


*	2CH	1.960.251.83
**	2CH + Filter	1.960.252.83
***	4CH	1.960.253.83
****	4CH + Filter	1.960.254.83

SUMMEN-AUSGANGSEINHEIT (HOCHPEGEL-EINGANG 2CH) 1.960.321 MASTER OUTPUT UNIT (HL INPUT 2CH) 1.960.321
 (HOCHPEGEL-EINGANG 4CH) 1.960.341 (HL INPUT 4CH) 1.960.341



MASTER UNIT (1.960.310) 1.960.321-85
1.960.341-85



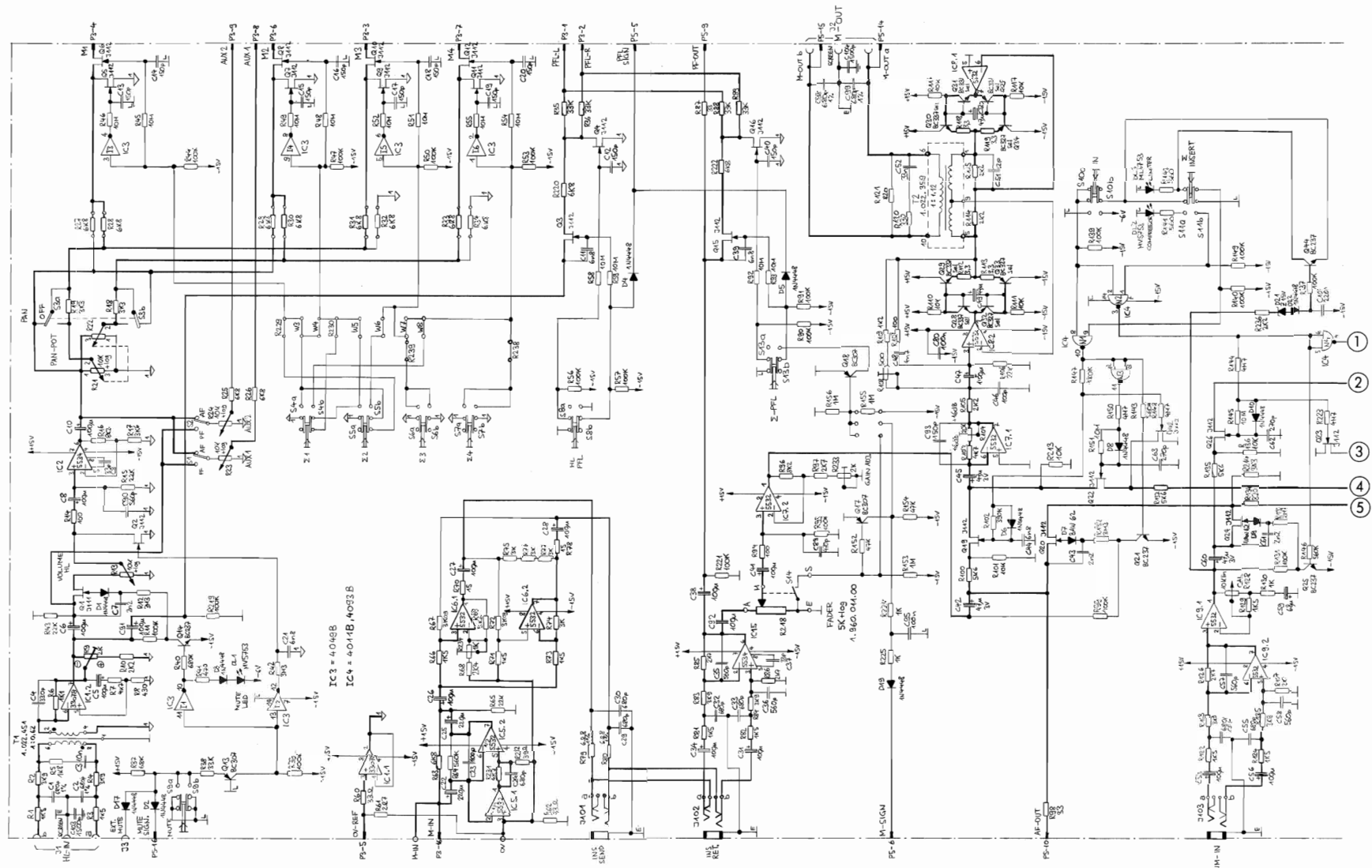
1.960.321
1.960.341

SWITCHES, PLUGS,
POTENTIOMETERS,
COMBINATIONS
(without knobs
& push buttons)

MASTER UNIT

(1.960.310) 1.960.321-85
1.960.341-85

PART 1



① 1.6.87 W Mark I	② 18.4.88	③	④	⑤	
STUDER MASTER UNIT 960		SC	1.960.310.85		

MASTER UNIT (1.960.310) 1.960.321-85 1.960.341-85

Ad. POS. REF. No. DESCRIPTION MANUFACTURER

Table with columns: Ad. POS., REF. No., DESCRIPTION, MANUFACTURER. Contains parts list for the Master Unit, including various resistors, capacitors, and connectors.

Ad. POS. REF. No. DESCRIPTION MANUFACTURER

Table with columns: Ad. POS., REF. No., DESCRIPTION, MANUFACTURER. Continuation of parts list for the Master Unit.

Ad. POS. REF. No. DESCRIPTION MANUFACTURER

Table with columns: Ad. POS., REF. No., DESCRIPTION, MANUFACTURER. Continuation of parts list for the Master Unit.

Ad. POS. REF. No. DESCRIPTION MANUFACTURER

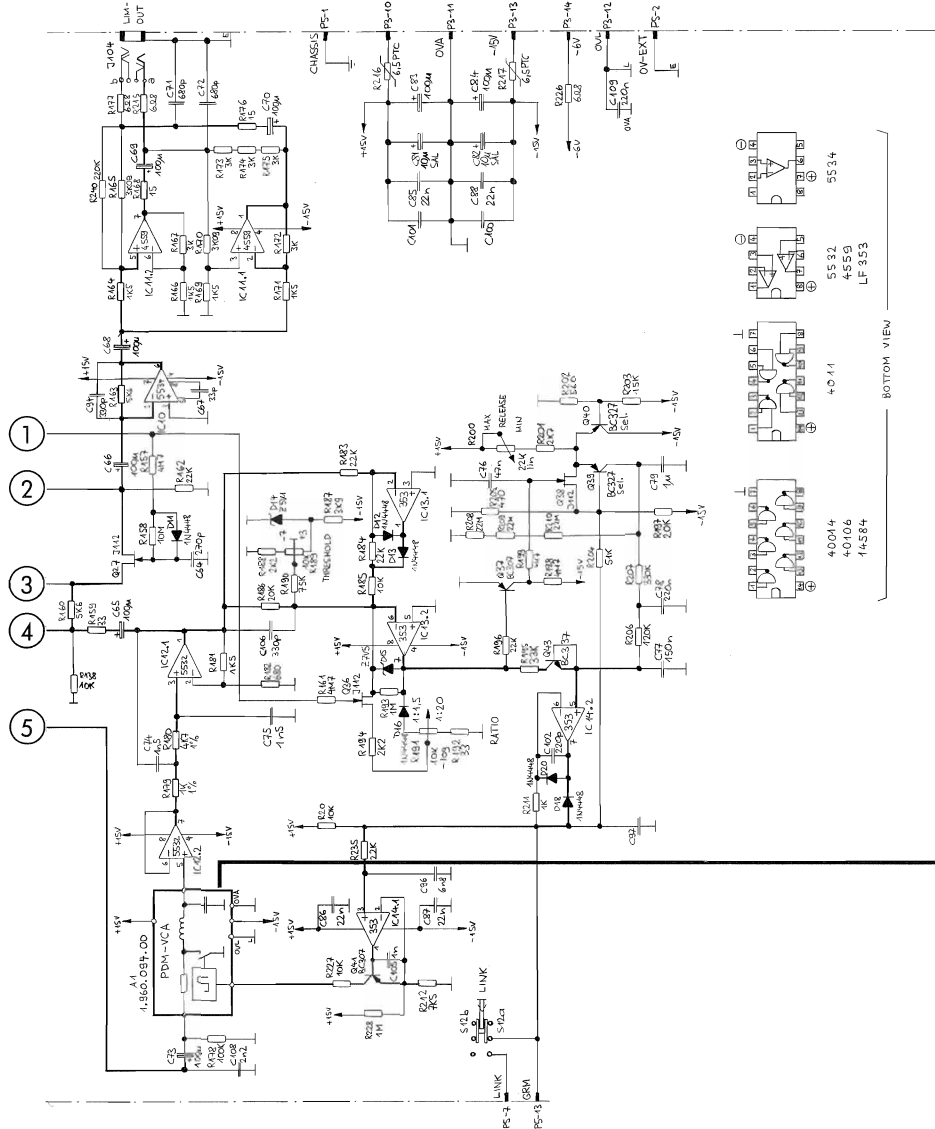
Table with columns: Ad. POS., REF. No., DESCRIPTION, MANUFACTURER. Continuation of parts list for the Master Unit.

- (1) change of PGM-VCA part number
(2) click suppression I CI1 MC33078
(3) change of transistor part number
(4) ICI, 5009011 replaced by 10100150
(5) new fader 1.960.01.81

Version: *** R21 / R22 not used
*** R21 / R22 1.010.004.58 without switch
*** R21 / R22 1.010.021.58 with 314/315
*** R21 / R22 1.010.021.58 with 314/315

MASTER UNIT (1.960.310) 1.960.321-85
1.960.341-85

PART 2

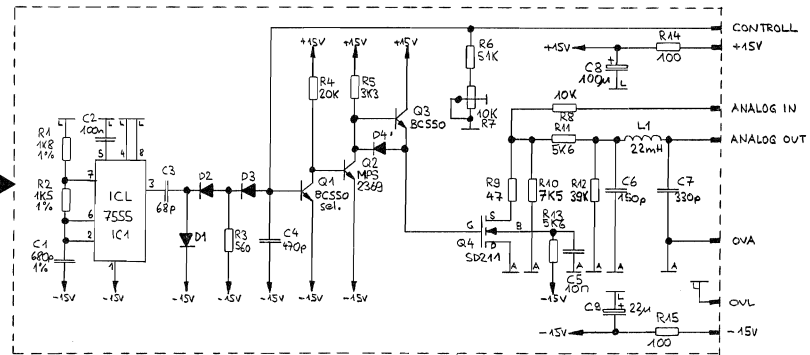
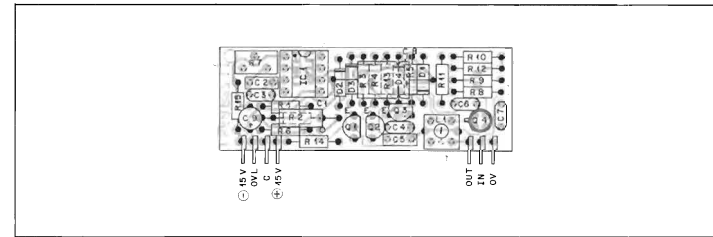


Pin assignment of plug3 and plug5:

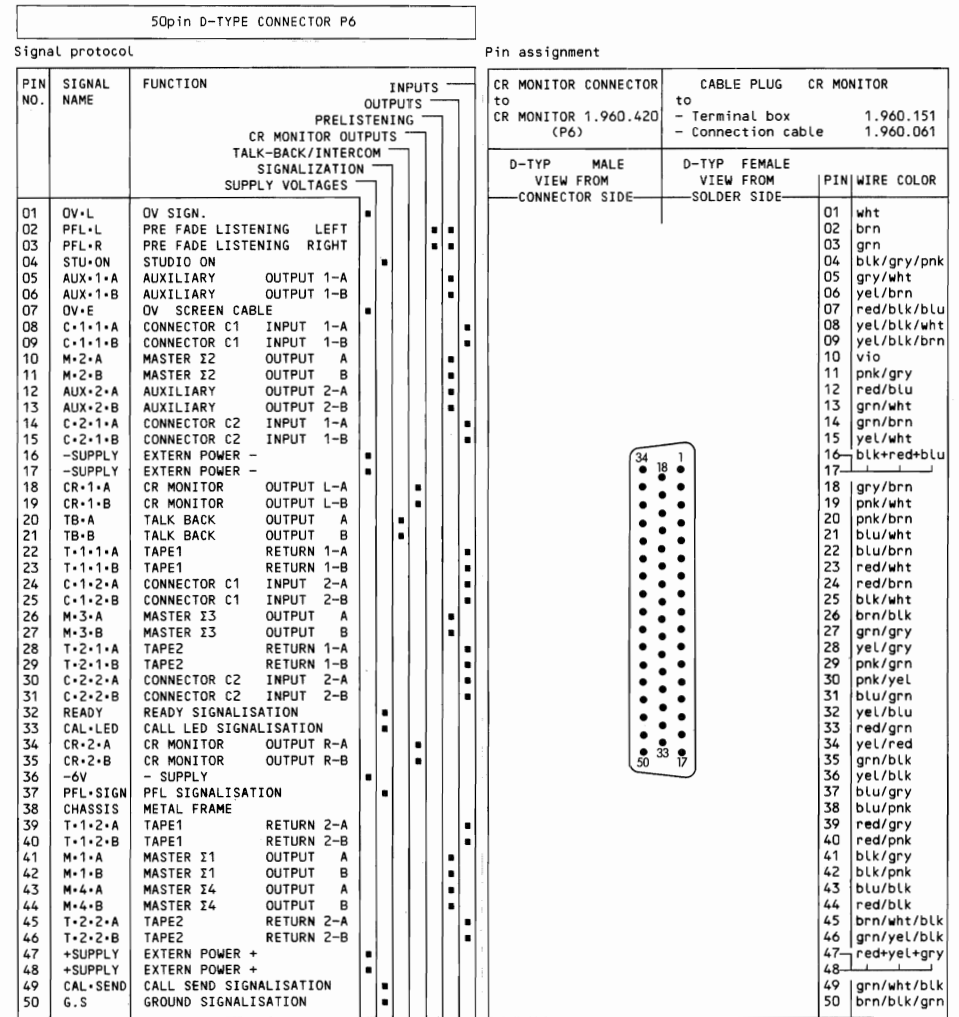
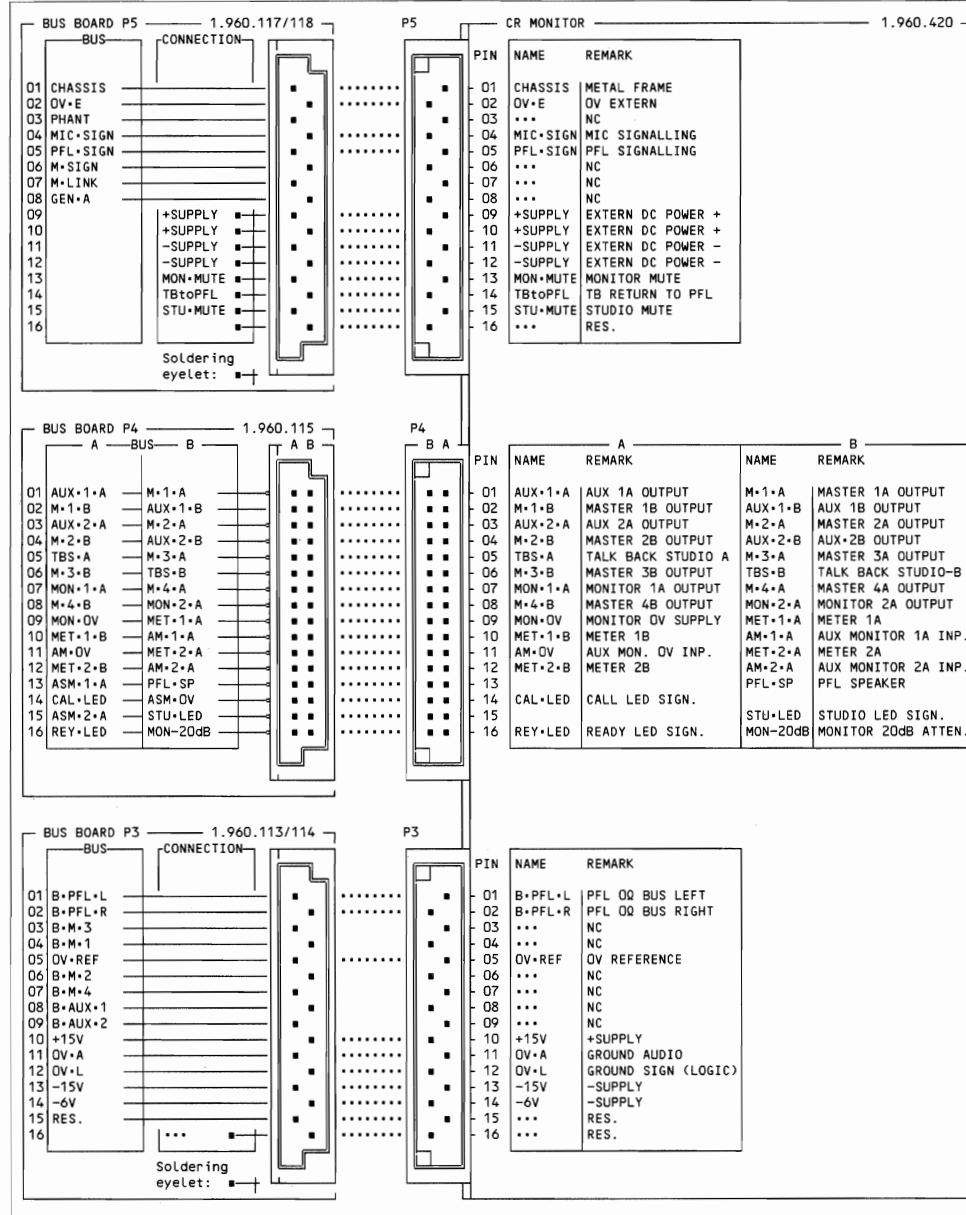
P3 PIN	NMAE
1	B-PFL-L
2	B-PFL-R
3	B-M3
4	B-M1
5	OV REF
6	B-M2
7	B-M4
8	B-AUX 1
9	B-AUX 2
10	+15V
11	OV-A
12	OV-L
13	-15V
14	- 6V
15	NC
16	M-IN

P5 PIN	NAME
1	GROUND
2	OV-E
3	NC
4	NC
5	PFL-SIG
6	M-SIG
7	LINK
8	NC
9	PF-OUT
10	AF-OUT
11	NC
12	NC
13	GRM
14	M-OUT-A
15	M-OUT-B
16	MUTE

PDM VCA UNIT
1.960.094-00

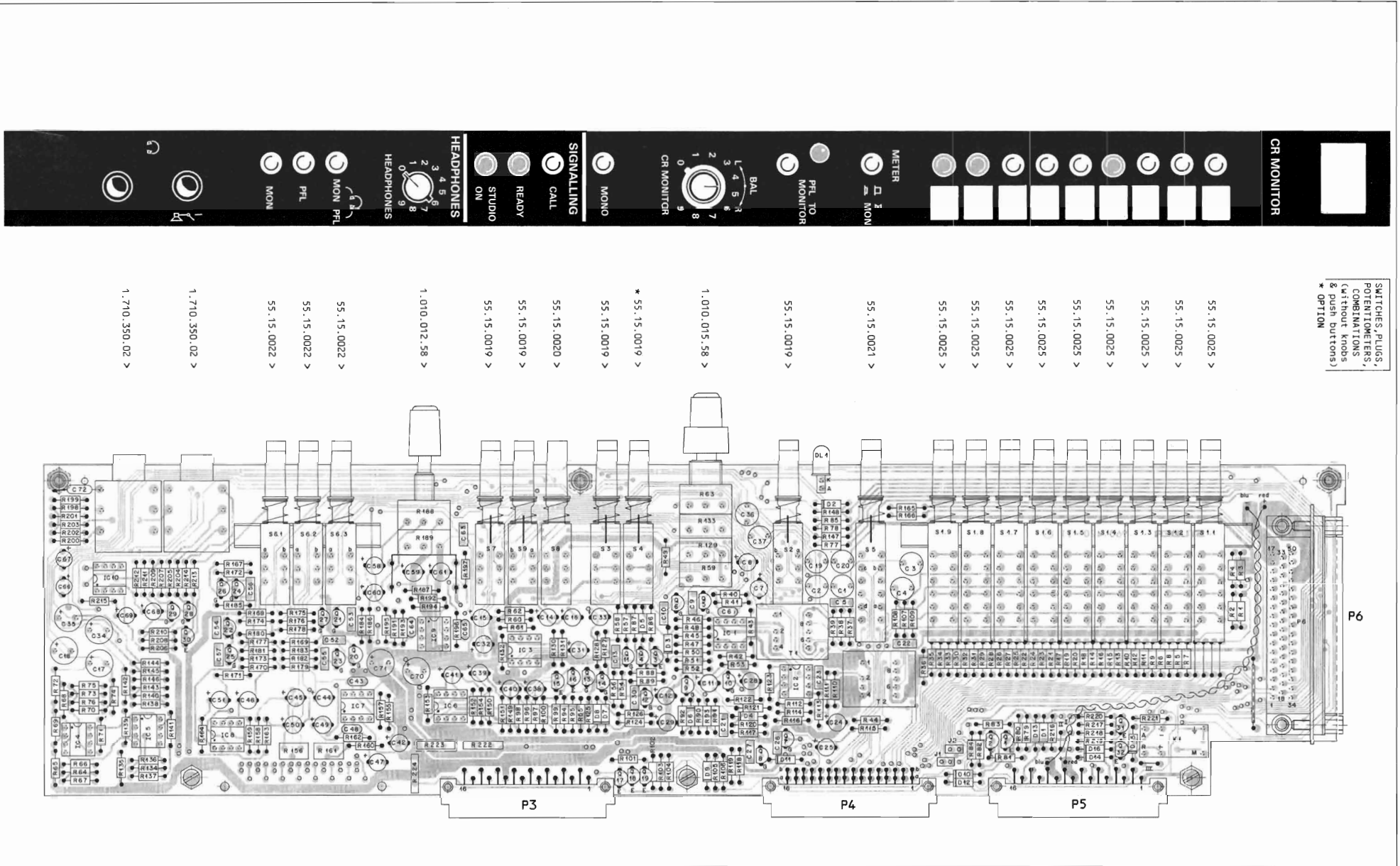


CR MONITOR EINHEIT (STEREO) 1.960.420 CR MONITOR UNIT (STEREO) 1.960.420



CR MONITOR UNIT

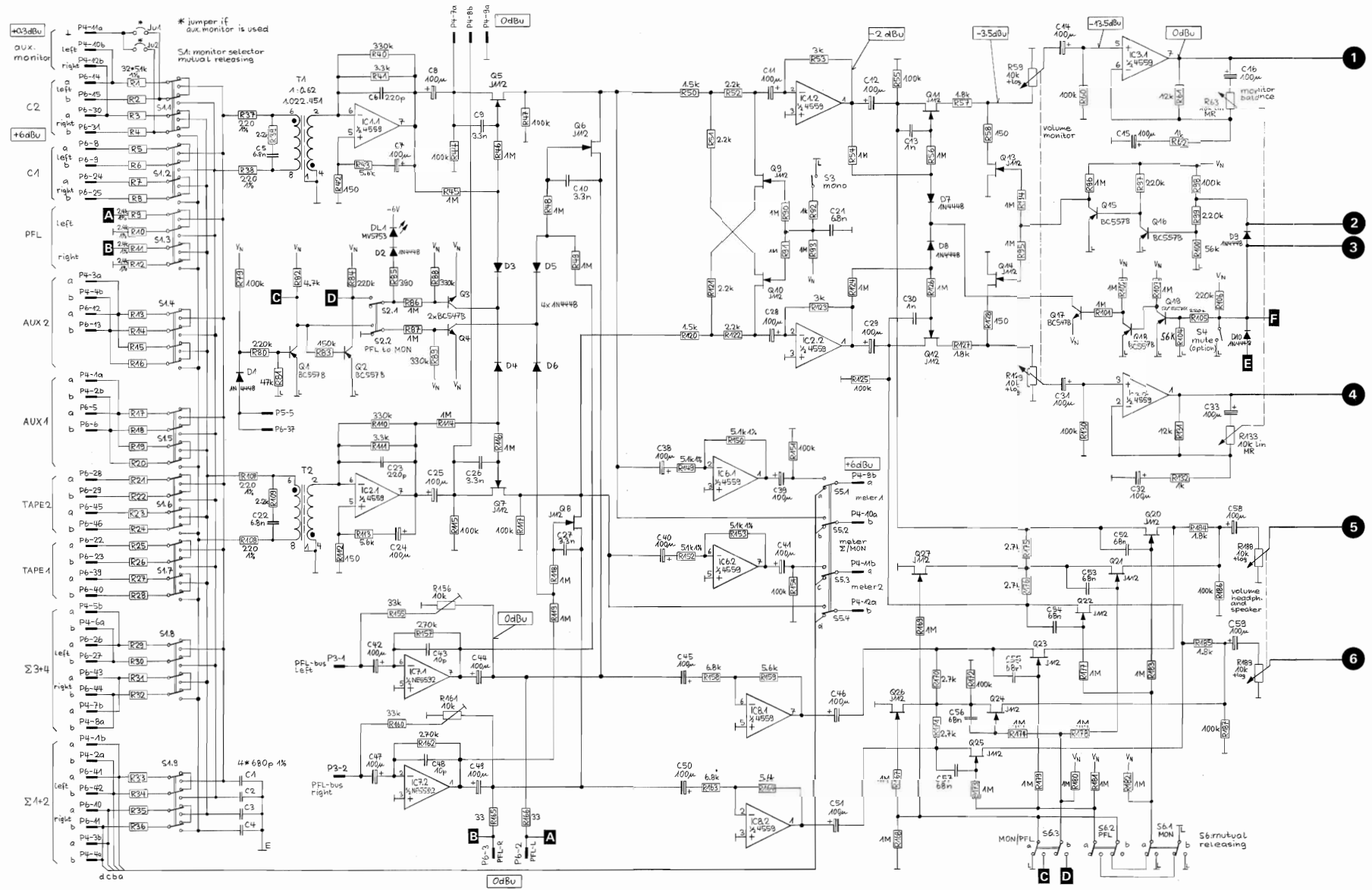
1.960.420-81



CR MONITOR UNIT

1.960.420-81

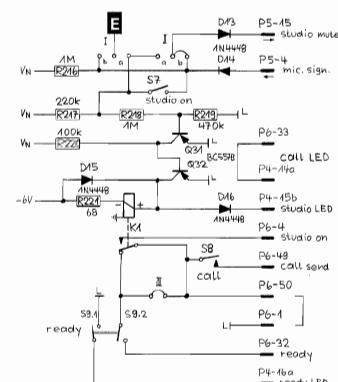
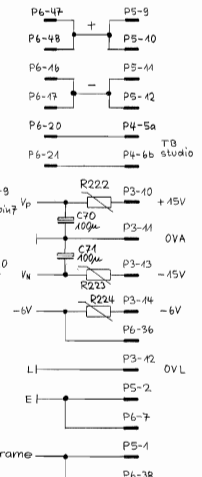
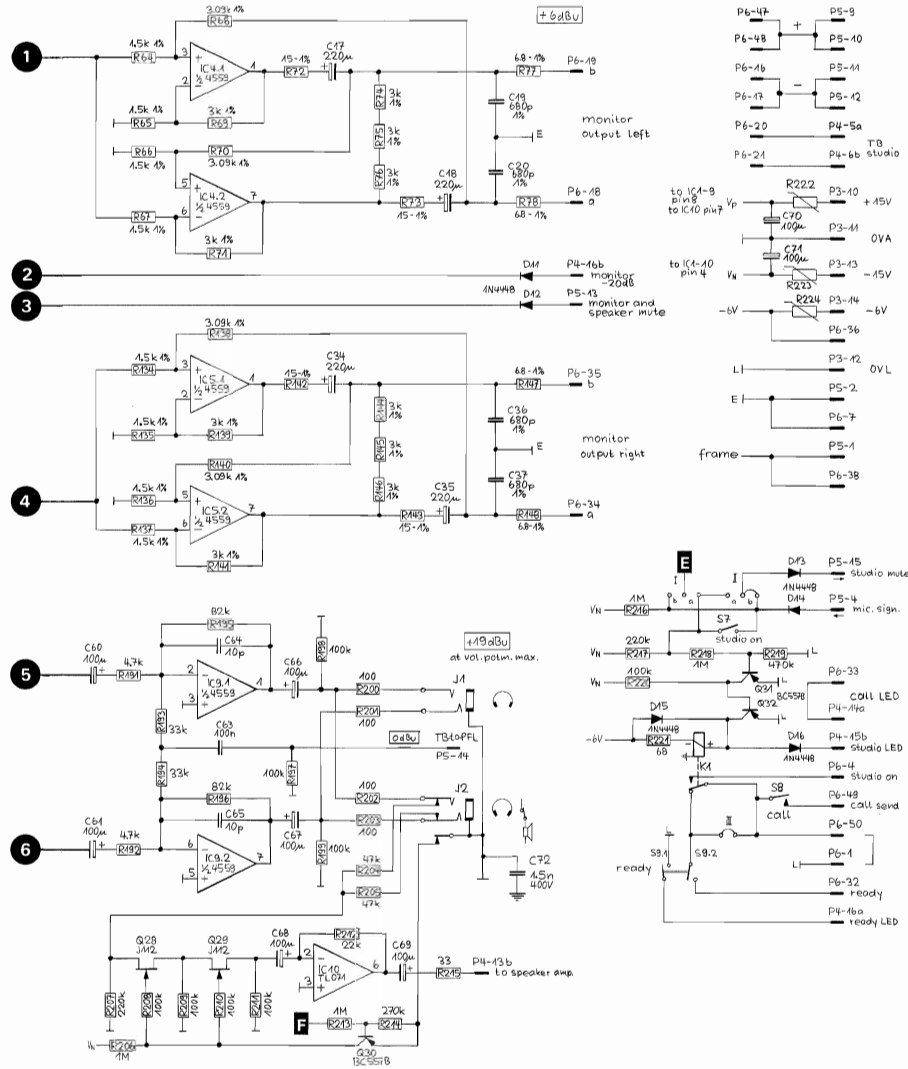
PART 1



CR MONITOR UNIT

1.960.420-81

PART 2



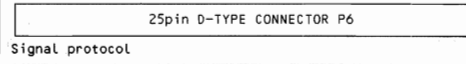
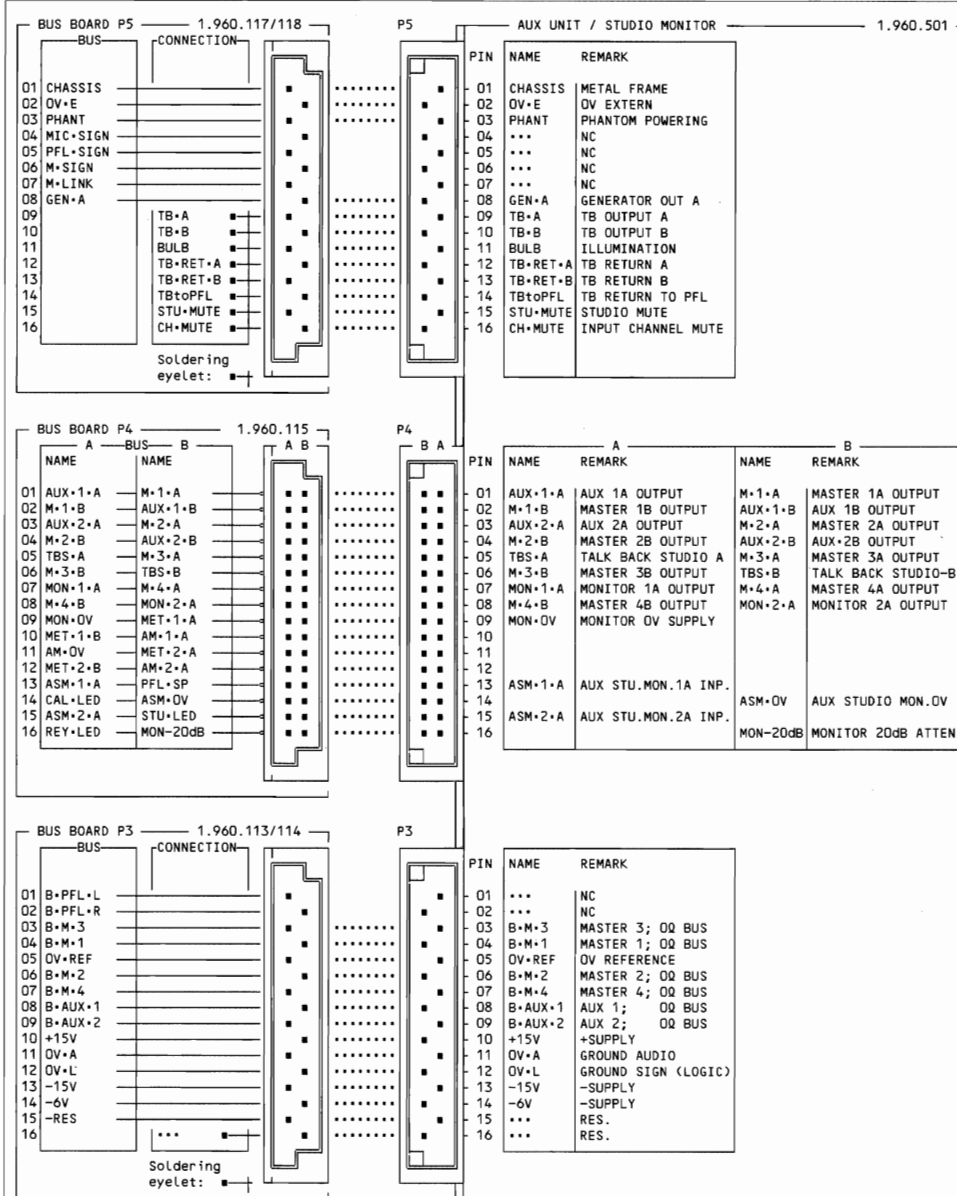
© 7-3-85 *ML*
STUDER

HILFSSUMMEN-AUSGANGSEINHEIT AUX MIT STUDIO-MONITORTEIL

1.960.501

AUXILIARY OUTPUT UNIT WITH STUDIO MONITOR SECTION

1.960.501



Signal protocol

Pin assignment

PIN NO.	SIGNAL NAME	FUNCTION	AUX OUTPUTS
01	-6V	-SUPPLY (OUT)	
02	CH-MUTE	CHANNEL MUTE	
03	TB S-SIG	TALK BACK SEND SIGN	
04	TB SIG+	TALK BACK SIGN. (+)	
05	OV-L	GROUND SIGN. (LOGIC)	
06	TB-MIC-B	TALK BACK MIC-B	
07	TB-MIC-A	TALK BACK MIC-A	
08	CHASSIS	METAL FRAME	
09	OV-E	OV SCREEN CABLE	
10	AUX-1 A	AUXILIARY OUTPUT 1-A	1-A
11	AUX-1-B	AUXILIARY OUTPUT 1-B	1-B
12	AUX-2-A	AUXILIARY OUTPUT 2-A	2-A
13	AUX-2-B	AUXILIARY OUTPUT 2-B	2-B
14	STU-1-A	STUDIO MONITOR OUTPUT 1-A	1-A
15	STU-1-B	STUDIO MONITOR OUTPUT 1-B	1-B
16	STU-2-A	STUDIO MONITOR OUTPUT 2-A	2-A
17	STU-2-B	STUDIO MONITOR OUTPUT 2-B	2-B
18	C-1-1-A	CONNECT.C1 (CH1) INPUT 1-A	*/#
19	C-1-1-B	CONNECT.C1 (CH1) INPUT 1-B	*/#
20	C-1-2-A	CONNECT.C1 (CH2) INPUT 2-A	*/#
21	C-1-2-B	CONNECT.C1 (CH2) INPUT 2-B	*/#
22	C-2-1-A	CONNECT.C2 (CH1) INPUT 1-A	*/#
23	C-2-1-B	CONNECT.C2 (CH1) INPUT 1-B	*/#
24	C-2-2-A	CONNECT.C2 (CH2) INPUT 2-A	*/#
25	C-2-2-B	CONNECT.C2 (CH2) INPUT 2-B	*/#

D-TYP VIEW FROM	MALE VIEW FROM	D-TYP VIEW FROM	FEMALE VIEW FROM	PIN	WIRE COLOR
	CONNECTOR SIDE		SOLDER SIDE		
				01	wht
				02	brn
				03	grn
				04	yel
				05	gry
				06	pnk
				07	blu
				08	red
				09	blk
				10	vio
				11	pnk/gry
				12	red/blu
				13	grn/wht
				14	grn/brn
				15	yel/wht
				16	yel/brn
				17	gry/wht
				18	gry/brn
				19	pnk/wht
				20	pnk/brn
				21	blu/wht
				22	brn/blu
				23	red/wht
				24	red/brn
				25	blk/wht

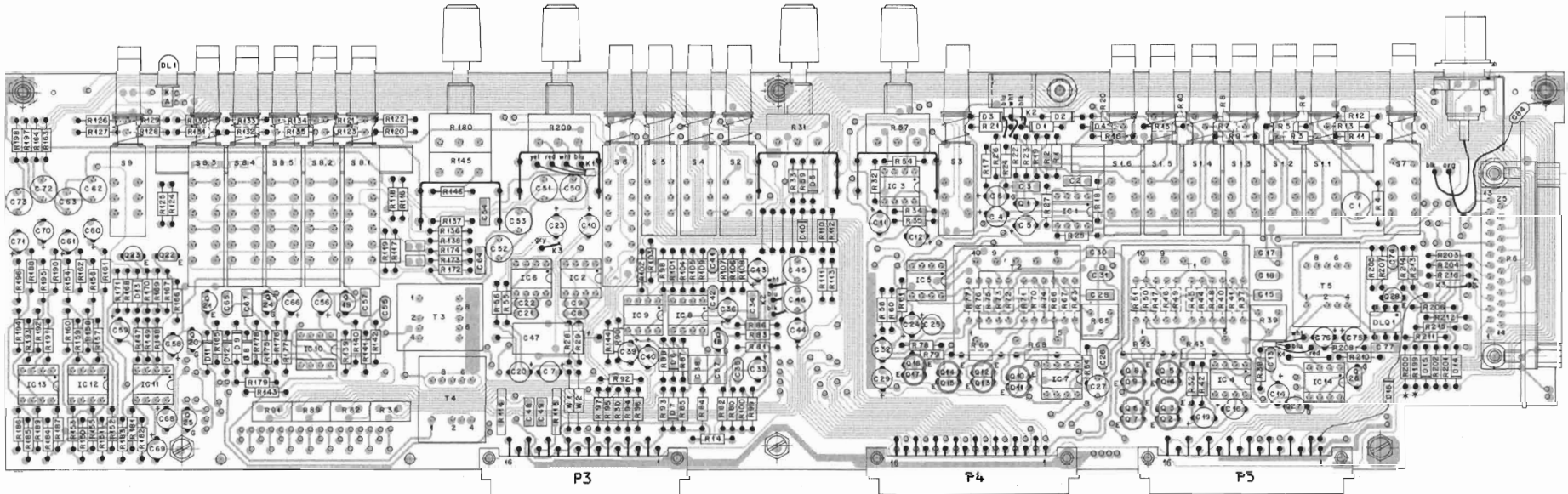
* are assigned as inputs of the studio monitor extension when the AUX MONITOR CR/STUDIO module 1.960.452 is used

AUX UNIT / STUDIO MONITOR 1.960.501-00



SWITCHES, PLUGS,
POTENTIOMETERS,
COMBINATIONS
(without knobs
& push buttons)

- 55.15.0019 >
- 55.15.0024 >
- 55.15.0024 >
- 55.15.0024 >
- 55.15.0024 >
- 55.15.0024 >
- 55.15.0024 >
- 55.15.0024 >
- 55.15.0024 >
- 55.15.0020 >
- 89.01.0343 >
- 55.15.0020 >
- 1.010.011.58 >
- 55.15.0020 >
- 55.15.0020 >
- 55.15.0020 >
- 55.15.0021 >
- 1.010.020.58 >
- 1.010.012.58 >
- 55.15.0023 >
- 55.15.0023 >
- 55.15.0023 >
- 55.15.0023 >
- 55.15.0019 >

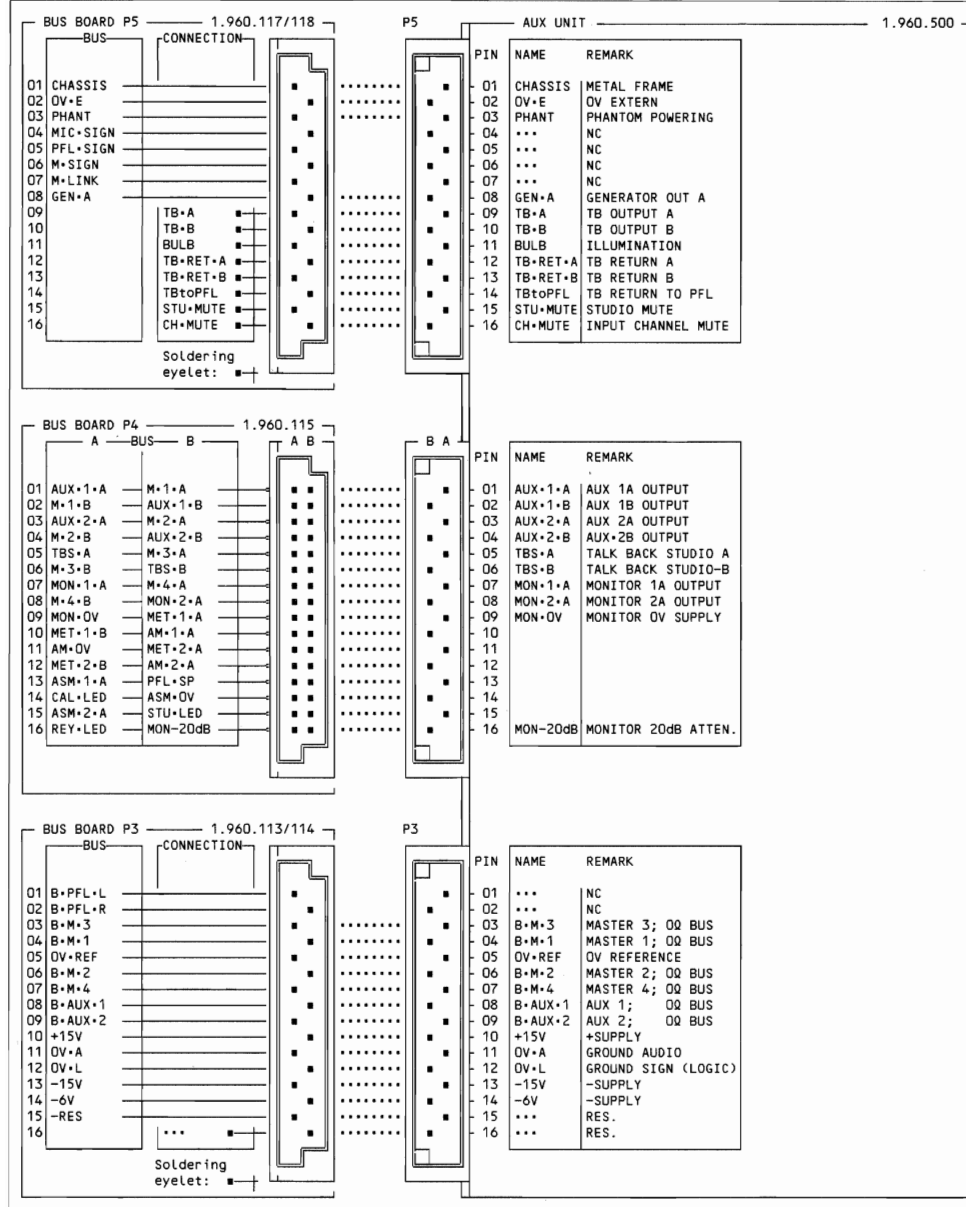


HILFSSUMMEN-AUSGANGSEINHEIT AUX
(OHNE STUDIO-MONITORTEIL)

1.960.500

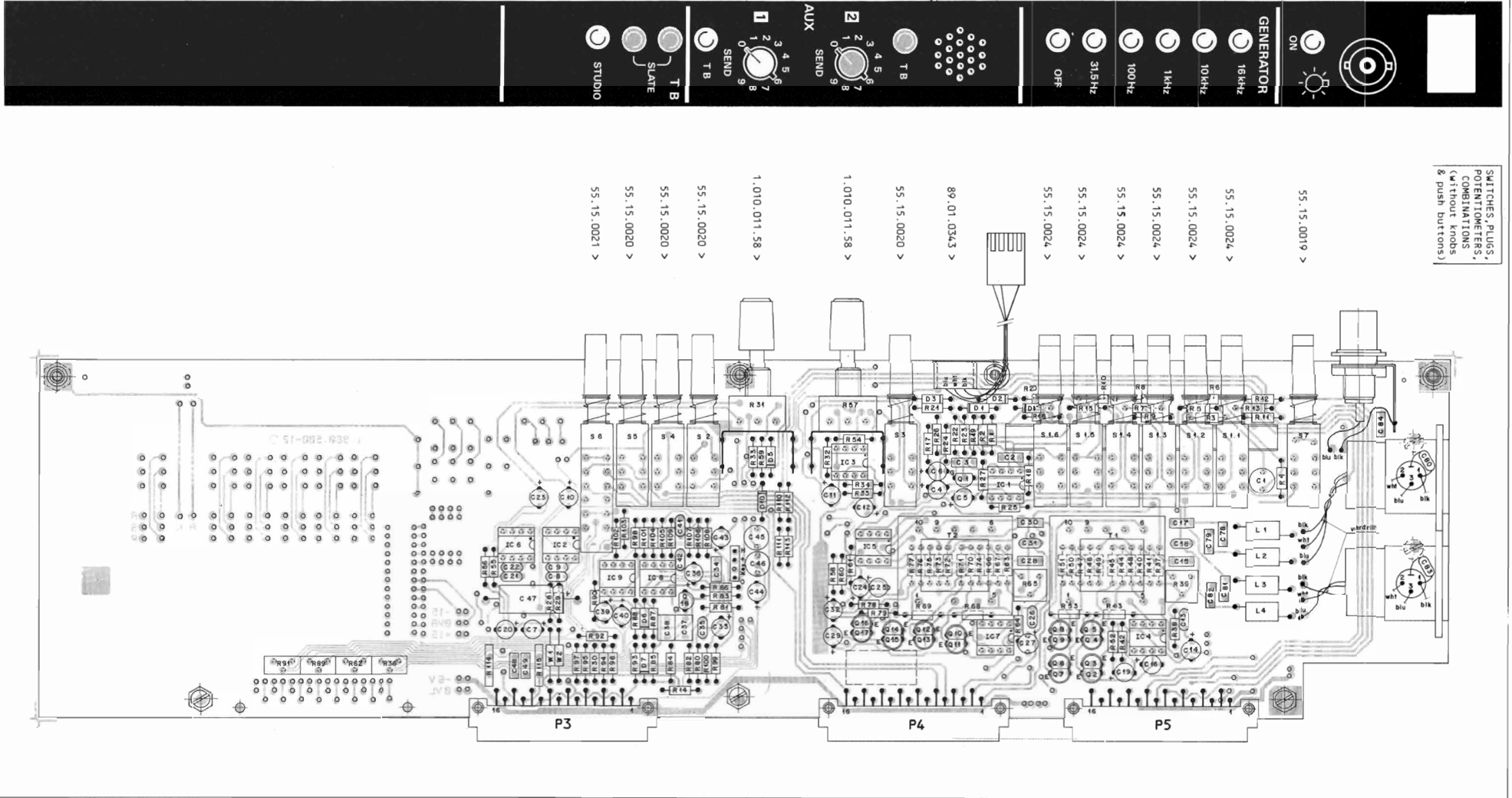
AUXILIARY OUTPUT UNIT
(W.H. STUDIO MONITOR SECTION)

1.960.500



AUX UNIT

1.960.500-82

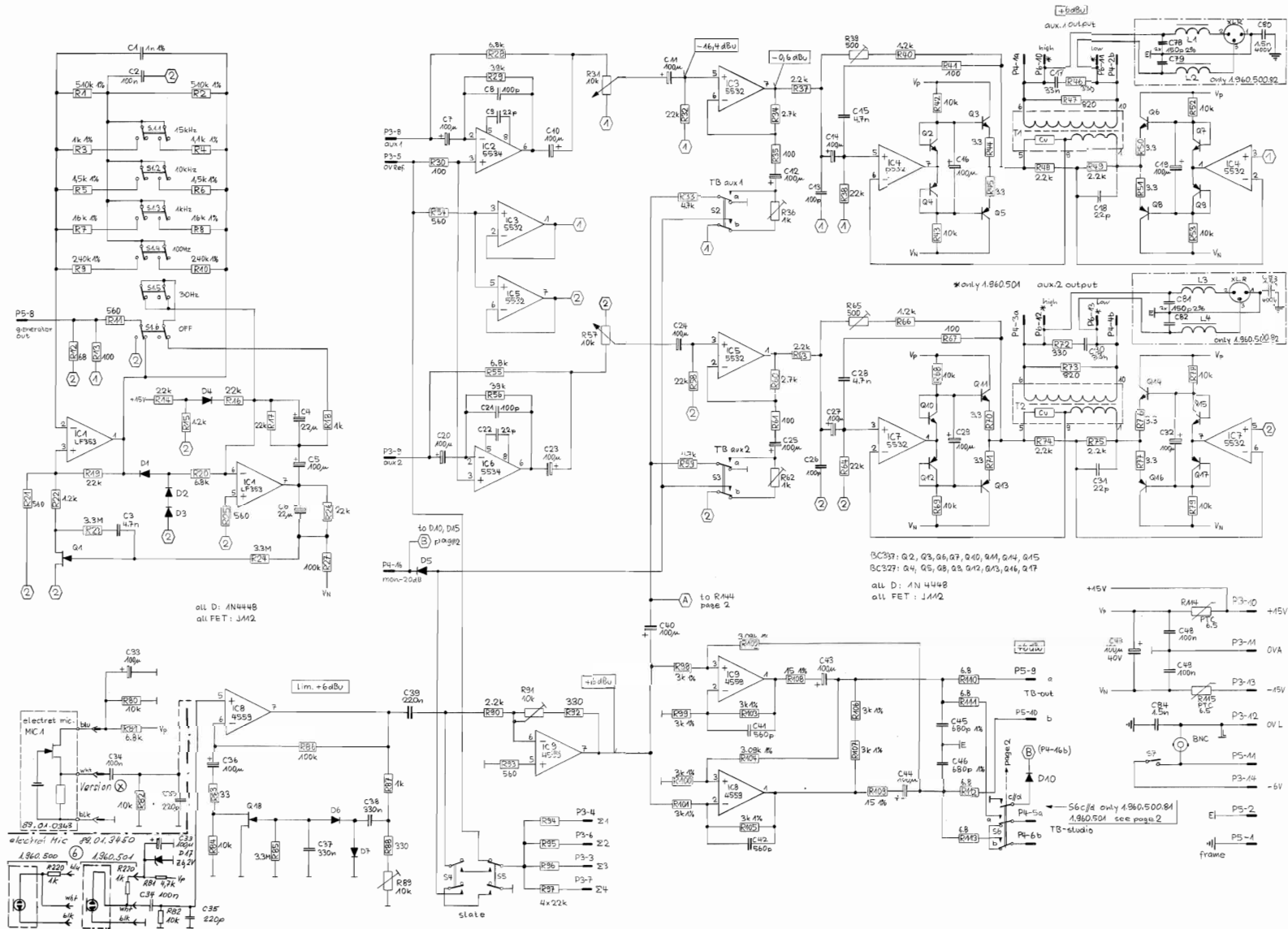


SWITCHES, PLUGS,
POTENTIOMETERS,
COMBINATIONS
(without knobs
& push buttons)

AUX UNIT
AUX UNIT / STUDIO MONITOR

1.960.500-82
1.960.501-00

PART 1



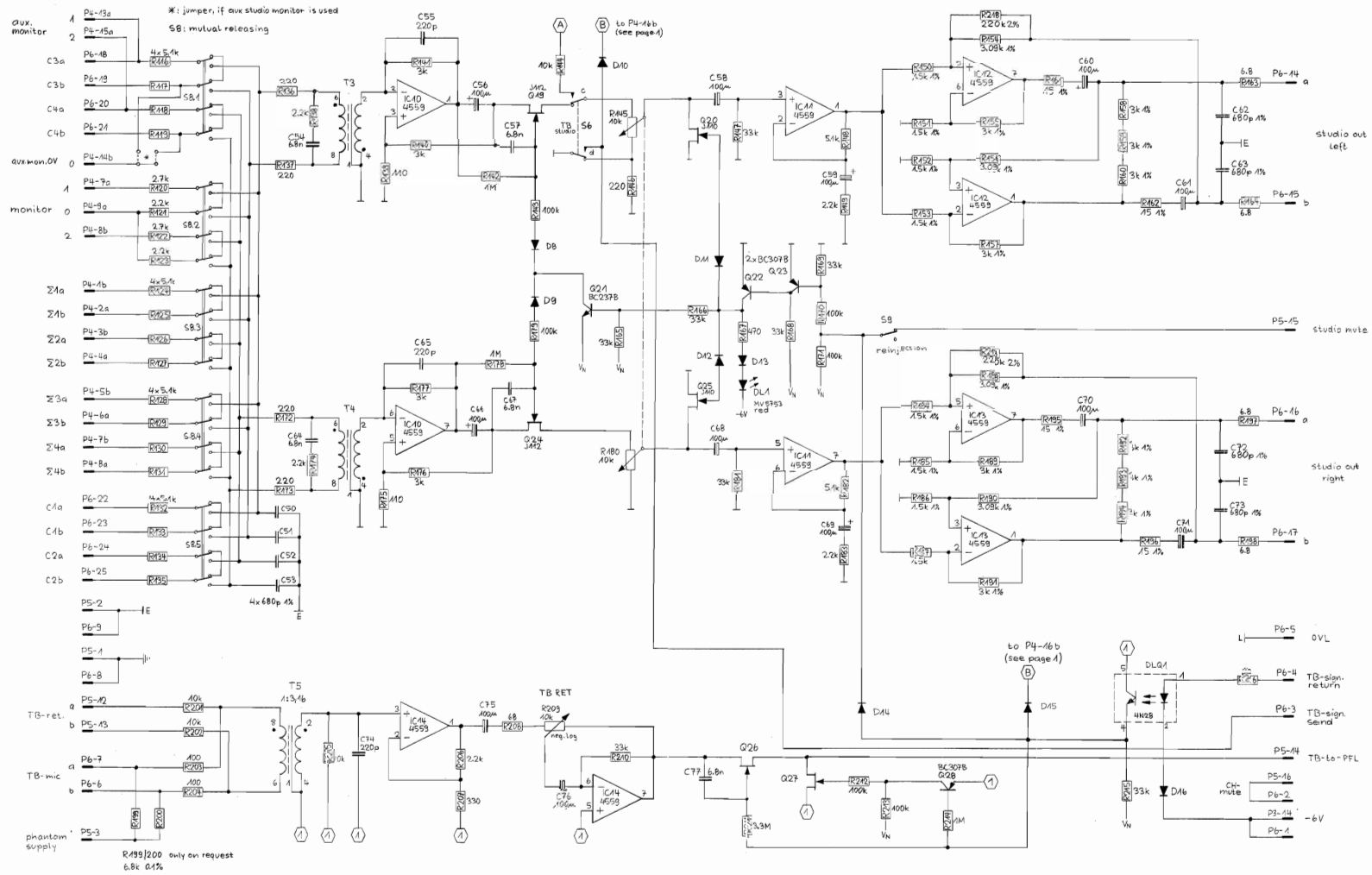
AUX UNIT 1.960.500-82
AUX UNIT / STUDIO MONITOR 1.960.501-00

Table with 4 columns: Ad., POS., REF.No., DESCRIPTION, MANUFACTURER. It lists various electronic components like resistors, capacitors, diodes, and integrated circuits, along with their values, tolerances, and manufacturer details.

AUX UNIT / STUDIO MONITOR

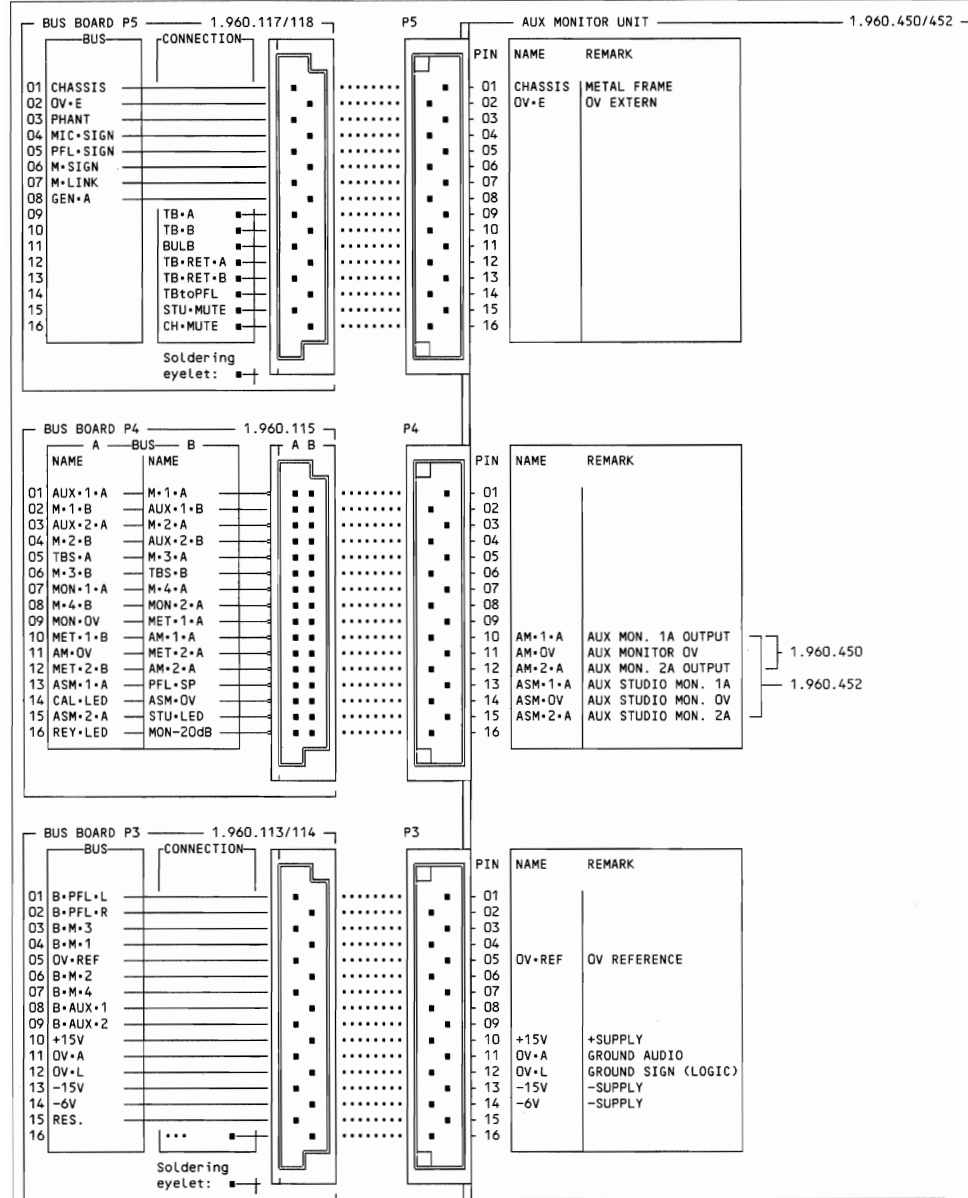
1.960.501-00

PART 2



© 16-11-83	27.12.94	5.8
© 4-4-85	© 6-3-85	© 15-10-85
© 25-10-85	© 13-6-86	
STUDER		Aux Unit / Studio Monitor
		SC 1.960.501.00

MONITOR-ERWEITERUNGSEINHEIT AUX CR 1.960.450 MONITOR EXTENSION UNIT AUX CR 1.960.450
 AUX CR/STUDIO 1.960.452 AUX CR/STUDIO 1.960.452



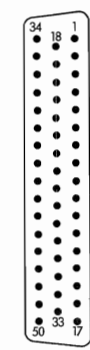
50pin D-TYPE CONNECTOR P6

Signal protocol

PIN NO.	SIGNAL NAME	FUNCTION	INPUTS	CH1/L	CH2/R
01	C-1-1-A	CONNECT.C1 (CH1)	INPUT 1-A		
02	C-1-1-B	CONNECT.C1 (CH1)	INPUT 1-B		
03	C-1-2-A	CONNECT.C1 (CH2)	INPUT 2-A		
04	C-1-2-B	CONNECT.C1 (CH2)	INPUT 2-B		
05	C-2-1-A	CONNECT.C2 (CH1)	INPUT 1-A		
06	C-2-1-B	CONNECT.C2 (CH1)	INPUT 1-B		
07	...	KEY			
08	C-2-2-A	CONNECT.C2 (CH2)	INPUT 2-A		
09	C-2-2-B	CONNECT.C2 (CH2)	INPUT 2-B		
10	C-3-1-A	CONNECT.C3 (CH1)	INPUT 1-A		
11	C-3-1-B	CONNECT.C3 (CH1)	INPUT 1-B		
12	C-3-2-A	CONNECT.C3 (CH2)	INPUT 2-A		
13	C-3-2-B	CONNECT.C3 (CH2)	INPUT 2-B		
14	C-4-1-A	CONNECT.C4 (CH1)	INPUT 1-A		
15	C-4-1-B	CONNECT.C4 (CH1)	INPUT 1-B		
16	C-4-2-A	CONNECT.C4 (CH2)	INPUT 2-A		
17	C-4-2-B	CONNECT.C4 (CH2)	INPUT 2-B		
18	C-5-1-A	CONNECT.C5 (CH1)	INPUT 1-A		
19	C-5-1-B	CONNECT.C5 (CH1)	INPUT 1-B		
20	C-5-2-A	CONNECT.C5 (CH2)	INPUT 2-A		
21	C-5-2-B	CONNECT.C5 (CH2)	INPUT 2-B		
22	C-6-1-A	CONNECT.C6 (CH1)	INPUT 1-A		
23	C-6-1-B	CONNECT.C6 (CH1)	INPUT 1-B		
24	C-6-2-A	CONNECT.C6 (CH2)	INPUT 2-A		
25	C-6-2-B	CONNECT.C6 (CH2)	INPUT 2-B		
26	C-7-1-A	CONNECT.C7 (CH1)	INPUT 1-A		
27	C-7-1-B	CONNECT.C7 (CH1)	INPUT 1-B		
28	C-7-2-A	CONNECT.C7 (CH2)	INPUT 2-A		
29	C-7-2-B	CONNECT.C7 (CH2)	INPUT 2-B		
30	C-8-1-A	CONNECT.C8 (CH1)	INPUT 1-A		
31	C-8-1-B	CONNECT.C8 (CH1)	INPUT 1-B		
32	C-8-2-A	CONNECT.C8 (CH2)	INPUT 2-A		
33	C-8-2-B	CONNECT.C8 (CH2)	INPUT 2-B		
34	RES				
35	RES				
36	RES				
37	RES				
38	RES				
39	RES				
40	RES				
41	RES				
42	OV-E	OV SCREEN CABLE			
43	RES				
44	RES				
45	OV-E	OV SCREEN CABLE			
46	CHASSIS	METAL FRAME			
47	C-9-1-A	CONNECT.C9 (CH1)	INPUT 1-A		
48	C-9-1-B	CONNECT.C9 (CH1)	INPUT 1-B		
49	C-9-2-A	CONNECT.C9 (CH2)	INPUT 2-A		
50	C-9-2-B	CONNECT.C9 (CH2)	INPUT 2-B		

Pin assignment

AUX MONITOR CONNECTOR to AUX MONITOR UNIT 1.960.450/452		CABLE CONNECTOR AUX MONITOR to Terminal box 1.960.154 - Connection cable 1.960.062	
D-TYP VIEW FROM CONNECTOR SIDE	MALE VIEW FROM	D-TYP FEMALE VIEW FROM SOLDER SIDE	PIN WIRE COLOR
			01 wht
			02 brn
			03 grn
			04 yel
			05 grn
			06 pnk
			07 KEY
			08 red
			09 blk
			10 vio
			11 pnk/gry
			12 red/blu
			13 grn/wht
			14 grn/brn
			15 yel/wht
			16 yel/brn
			17 gry/wht
			18 gry/brn
			19 pnk/wht
			20 pnk/brn
			21 blu/wht
			22 blu/brn
			23 red/wht
			24 red/brn
			25 blk/wht
			26 blk/brn
			27 grn/gry
			28 yel/gry
			29 grn/pnk
			30 yel/pnk
			31 grn/blu
			32 yel/blu
			33 grn/red
			34 yel/red
			35 grn/blk
			36 yel/blk
			37 blu/gry
			38 blu/pnk
			39 red/gry
			40 red/pnk
			41 gry/blk
			42 pnk/blk
			43 blu/blk
			44 red/blk
			45 brn/wht/blk
			46 grn/yel/blk
			47 pnk/gry/blk
			48 red/blu/blk
			49 grn/wht/blk
			50 grn/brn/blk



AUX MONITOR CR/STUDIO

1.960.452-00

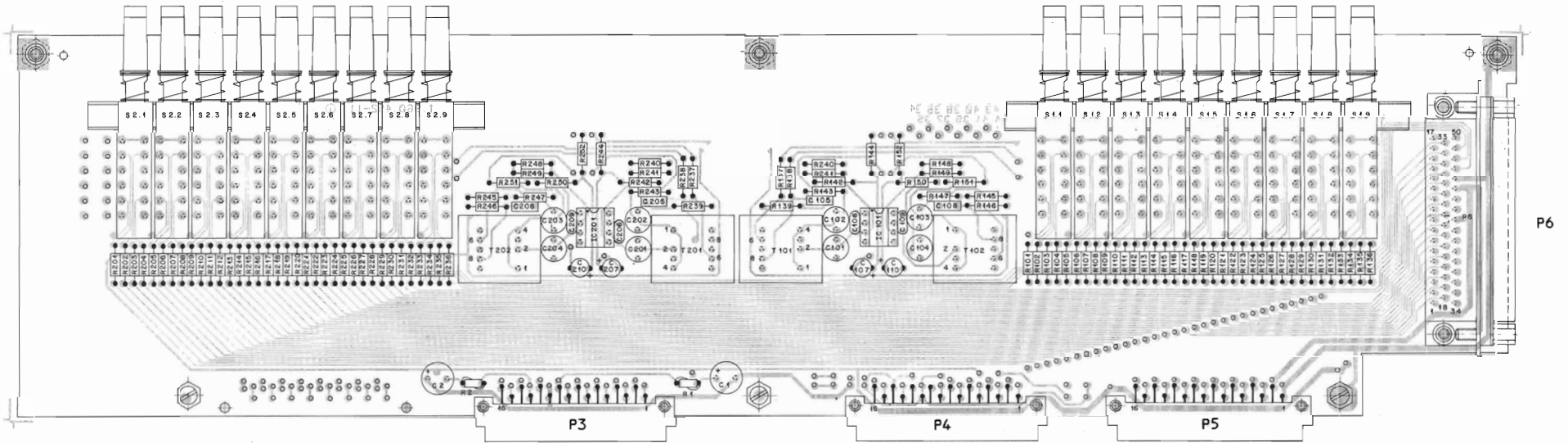
1.960.450
1.960.452



SWITCHES, PLUGS,
POTENTIOMETERS,
COMBINATIONS
(Without knobs
& push buttons)

- 55-15.0025 >
- 55-15.0025 >
- 55-15.0025 >
- 55-15.0025 >
- 55-15.0025 >
- 55-15.0025 >
- 55-15.0025 >
- 55-15.0025 >
- 55-15.0025 >
- 55-15.0025 >

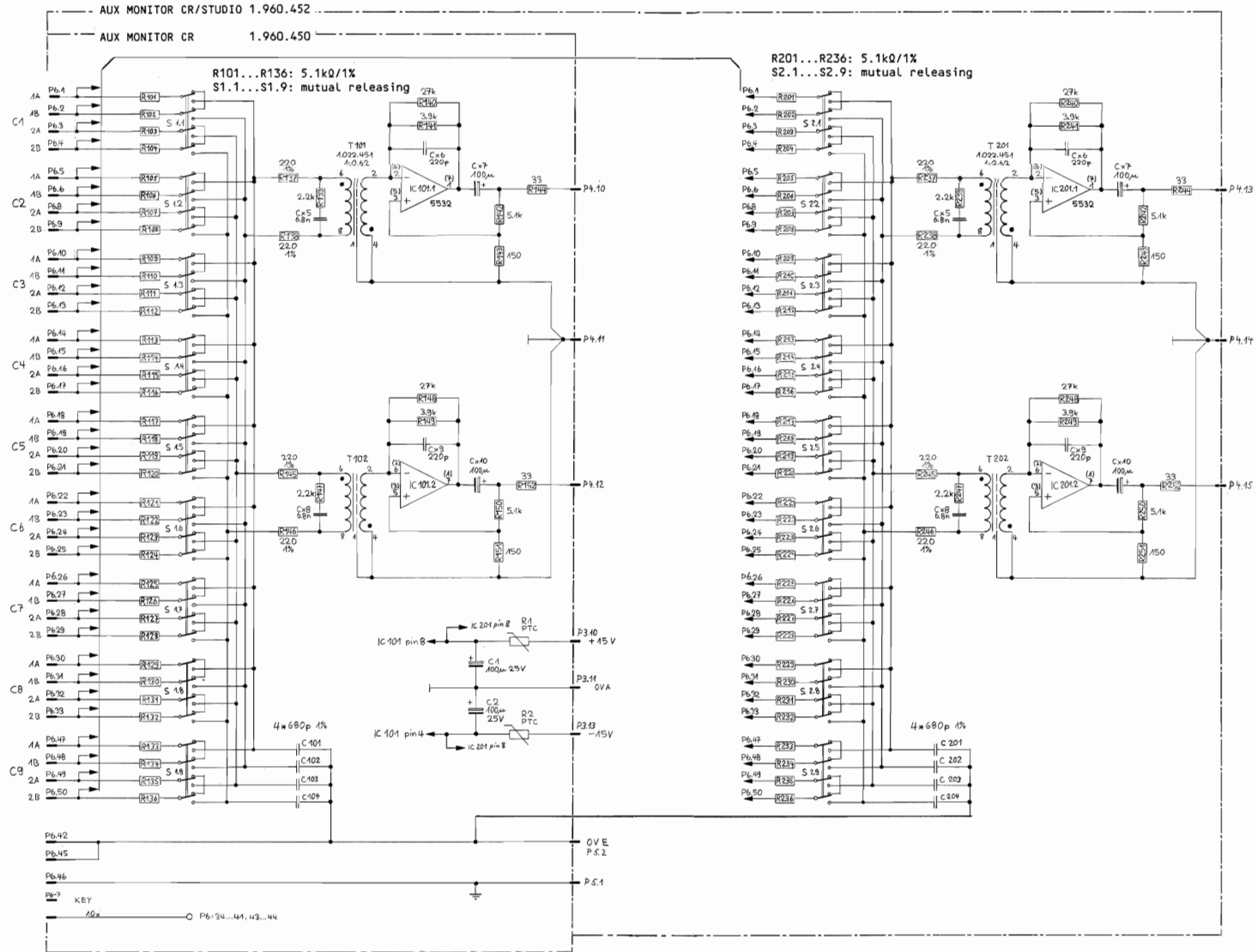
- 55-15.0025 >
- 55-15.0025 >
- 55-15.0025 >
- 55-15.0025 >
- 55-15.0025 >
- 55-15.0025 >
- 55-15.0025 >
- 55-15.0025 >
- 55-15.0025 >
- 55-15.0025 >



P6

AUX MONITOR UNIT CR

1.960.450-00



AUX MONITOR UNIT CR/STUDIO 1.960.452-00

IND.	POS.NO.	PART NO.	VALUE	SPECIFICATIONS / EQUIVALENT	MANUF.
C****1	59.22.9101	100 uF		EL	
C****2	59.22.9101	100 uF		25V EL	
C****3	59.09.1081	880 pF		1% PP	
C****4	59.09.1081	880 pF		1% PP	
C****5	59.09.1081	880 pF		1% PP	
C****6	59.09.1081	880 pF		1% PP	
C****7	59.22.9101	100 uF		10V EL	
C****8	59.06.0682	6.8 nF		1% PE	
C****9	59.22.9101	100 uF		10V EL	
C****10	59.22.9101	100 uF		10V EL	
IC**x01	96.09.0109	NE5532		RC5532NH, KR5532H	Sig.Rex
P****3	94.11.0207	296 pin		1/2-murcard connector, male	
P****4	94.11.0207	296 pin		1/2-murcard connector, male	
P****5	94.11.0207	296 pin		1/2-murcard connector, male	
P****6	94.13.0019	30 pin		12-type connector, male	AMP
R****1	37.92.1020	42 Ohm		PTC, 80mA	
R****2	37.92.1020	42 Ohm		PTC, 80mA	
R****3	37.11.3512	5.1 kOhm		1% 1% 1% 1%	
R****4	37.11.3512	5.1 kOhm		1% 1% 1% 1%	
R****5	37.11.3512	5.1 kOhm		1% 1% 1% 1%	
R****6	37.11.3512	5.1 kOhm		1% 1% 1% 1%	
R****7	37.11.3512	5.1 kOhm		1% 1% 1% 1%	
R****8	37.11.3512	5.1 kOhm		1% 1% 1% 1%	
R****9	37.11.3512	5.1 kOhm		1% 1% 1% 1%	
R****10	37.11.3512	5.1 kOhm		1% 1% 1% 1%	
R****11	37.11.3512	5.1 kOhm		1% 1% 1% 1%	
R****12	37.11.3512	5.1 kOhm		1% 1% 1% 1%	
R****13	37.11.3512	5.1 kOhm		1% 1% 1% 1%	
R****14	37.11.3512	5.1 kOhm		1% 1% 1% 1%	
R****15	37.11.3512	5.1 kOhm		1% 1% 1% 1%	
R****16	37.11.3512	5.1 kOhm		1% 1% 1% 1%	
R****17	37.11.3512	5.1 kOhm		1% 1% 1% 1%	
R****18	37.11.3512	5.1 kOhm		1% 1% 1% 1%	
R****19	37.11.3512	5.1 kOhm		1% 1% 1% 1%	
R****20	37.11.3512	5.1 kOhm		1% 1% 1% 1%	
R****21	37.11.3512	5.1 kOhm		1% 1% 1% 1%	
R****22	37.11.3512	5.1 kOhm		1% 1% 1% 1%	
R****23	37.11.3512	5.1 kOhm		1% 1% 1% 1%	
R****24	37.11.3512	5.1 kOhm		1% 1% 1% 1%	
R****25	37.11.3512	5.1 kOhm		1% 1% 1% 1%	
R****26	37.11.3512	5.1 kOhm		1% 1% 1% 1%	
R****27	37.11.3512	5.1 kOhm		1% 1% 1% 1%	
R****28	37.11.3512	5.1 kOhm		1% 1% 1% 1%	
R****29	37.11.3512	5.1 kOhm		1% 1% 1% 1%	
R****30	37.11.3512	5.1 kOhm		1% 1% 1% 1%	
R****31	37.11.3512	5.1 kOhm		1% 1% 1% 1%	
R****32	37.11.3512	5.1 kOhm		1% 1% 1% 1%	
R****33	37.11.3512	5.1 kOhm		1% 1% 1% 1%	
R****34	37.11.3512	5.1 kOhm		1% 1% 1% 1%	
R****35	37.11.3512	5.1 kOhm		1% 1% 1% 1%	
R****36	37.11.3512	5.1 kOhm		1% 1% 1% 1%	
R****37	37.11.3221	270 Ohm		1% 1%	
R****38	37.11.3221	270 Ohm		1% 1%	
R****39	37.11.3222	42 Ohm		1% 1%	
R****40	37.11.4279	27 kOhm		1% 1%	
R****41	37.11.4300	1.5k Ohm		1% 1%	
R****42	37.11.3512	5.1 kOhm		1% 1%	
R****43	37.11.4311	150 Ohm		1% 1%	
R****44	37.11.4330	33 Ohm		1% 1%	
R****45	37.11.3221	270 Ohm		1% 1%	
R****46	37.11.3221	270 Ohm		1% 1%	
R****47	37.11.3222	42 Ohm		1% 1%	
R****48	37.11.4279	27 kOhm		1% 1%	
R****49	37.11.4300	1.5k Ohm		1% 1%	
R****50	37.11.3512	5.1 kOhm		1% 1%	
R****51	37.11.4311	150 Ohm		1% 1%	
R****52	37.11.4330	33 Ohm		1% 1%	
S****x	95.15.0025	9949u		511...51-9 mutual rnltealing	Sch
T****01	1.022.491.00				St
T****02	1.022.491.00				St

INDICES K=1: aux control room monitor
 K=2: aux studio monitor

S T U D E R (00) 85/01/15 WY AUX CR/STUDIO MONITOR 1.960.452-00
 AUX CR MONITOR 1.960.450-00

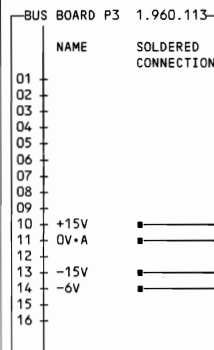
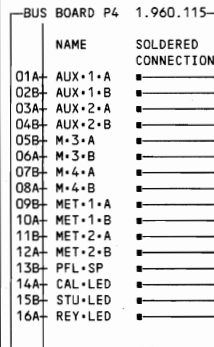
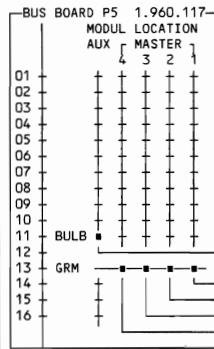
INSTRUMENTEN PANEL

2CH 1.961.902
4CH 1.961.904

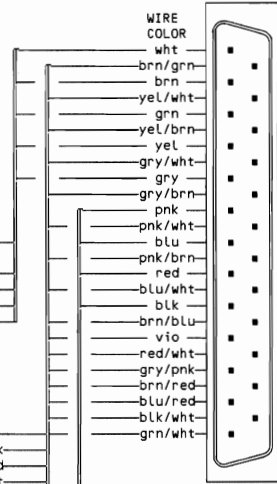
METER PANEL

2CH 1.961.902
4CH 1.961.904

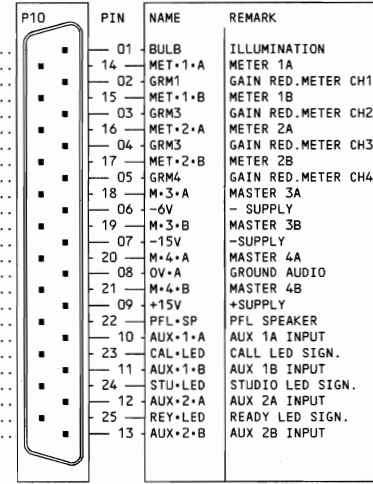
BUS BOARD CONNECTION



PANEL CONNECTING CABLE WITH PLUG

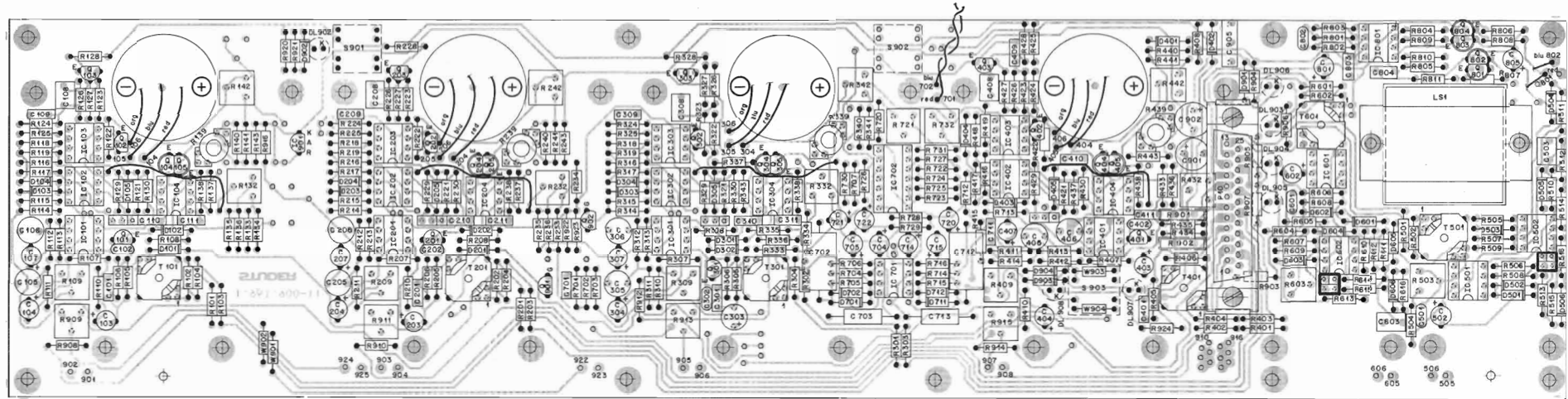
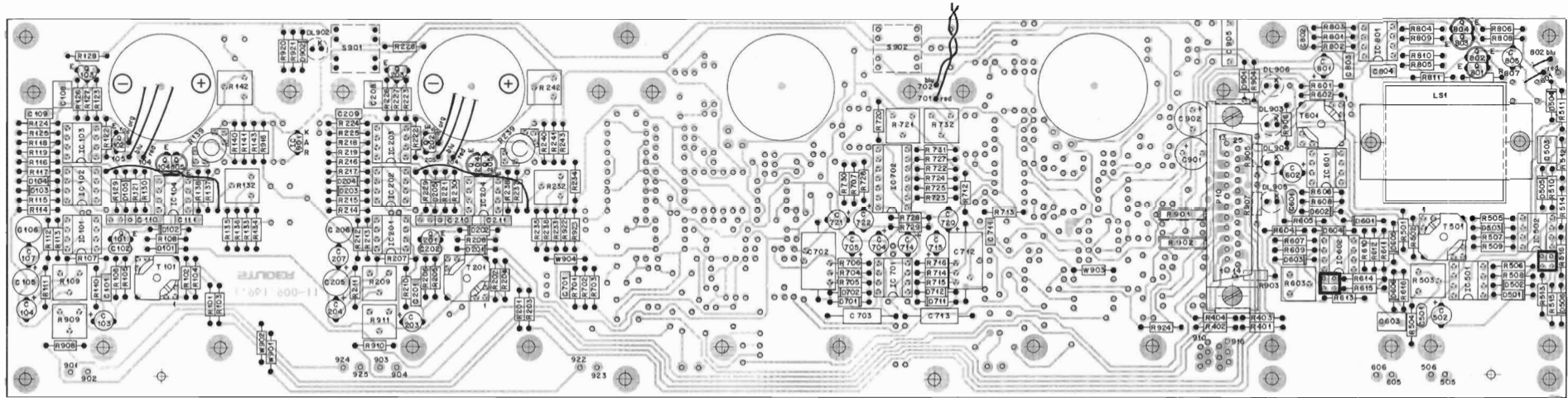


PANEL BOARD



METER PANEL 2CH
METER PANEL 4CH

1.961.902-81
1.961.904-81

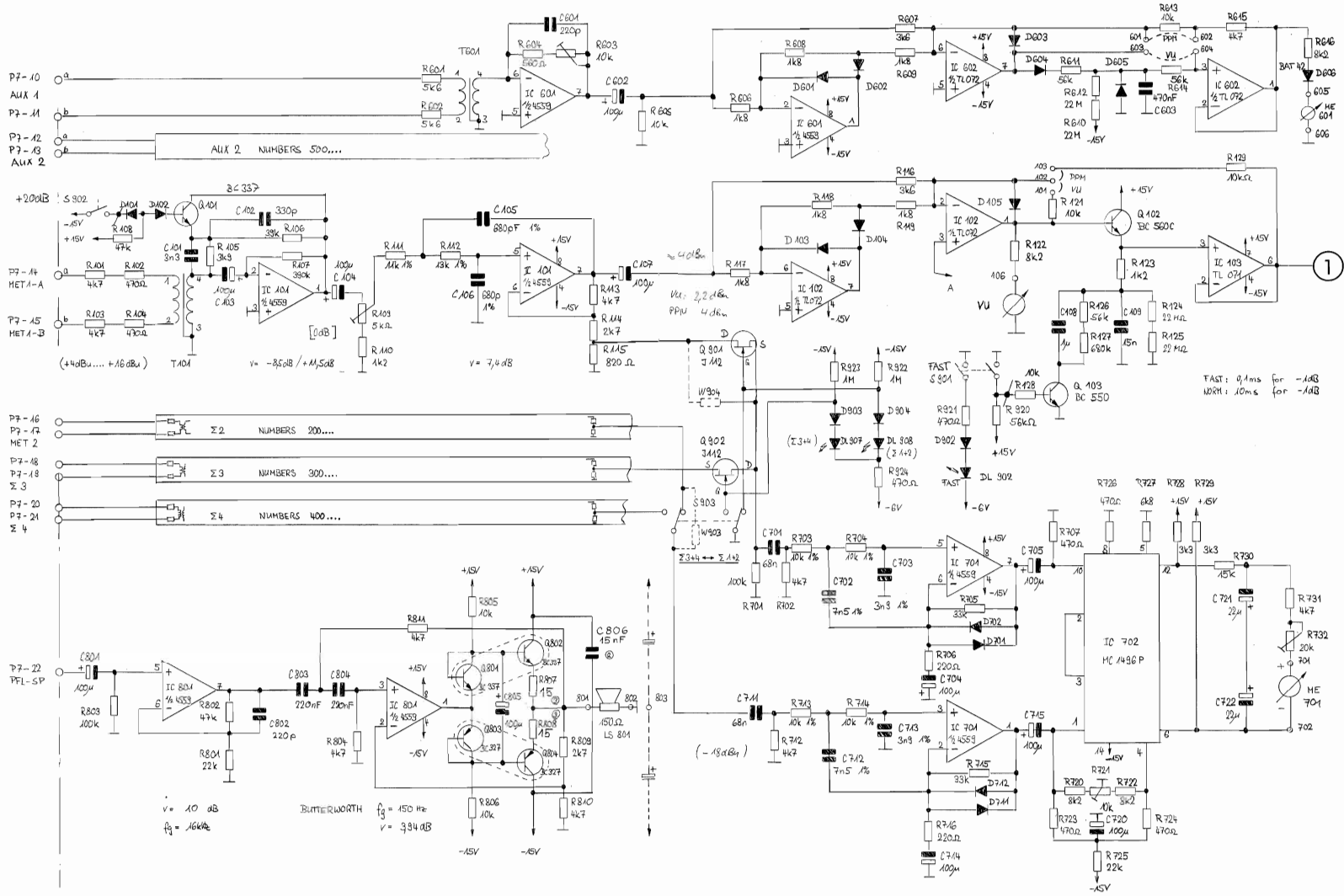


	MAIN METERS					GAIN REDUCTION METERS — GRM												AUX METERS								
	VU	PPM	2CH MIXER		3CH MIXER				4CH MIXER				VU		PPM											
	n05	n06	n04	n05	CH1	CH2	CH1	CH2	CH3	CH1	CH2	CH3	CH4	AUX 1	AUX 2	AUX 1	AUX 2									
Soldering eyelet	n05	n06	n04	n05	924	925	922	923	901	902	903	904	905	906	901	902	903	904	905	906	907	908	605	606	505	506
Wire color	blu	org	red	blu	blu	red	blu	red	blu	red	blu	red	blu	red	blu	red	blu	red	blu	red	blu	red	red	blu	red	blu
Polarity	-	+	+	-	-	+	-	+	-	+	-	+	-	+	-	+	-	+	-	+	-	+	-	+	-	-
Set jumper	<input type="checkbox"/>	<input type="checkbox"/>	<input type="checkbox"/>	<input type="checkbox"/>																		<input type="checkbox"/>	<input type="checkbox"/>	<input type="checkbox"/>	<input type="checkbox"/>	

METER PANEL 2CH
METER PANEL 4CH

1.961.902-81
1.961.904-81

PART 1



① 28.11.85 A. Eckert	② 14.1.81 A. Eckert	③ 20.10.93 A. Eckert	○ . .	○ . .
STUDER			PANEL 961	
			SC	1.961.902/904.81

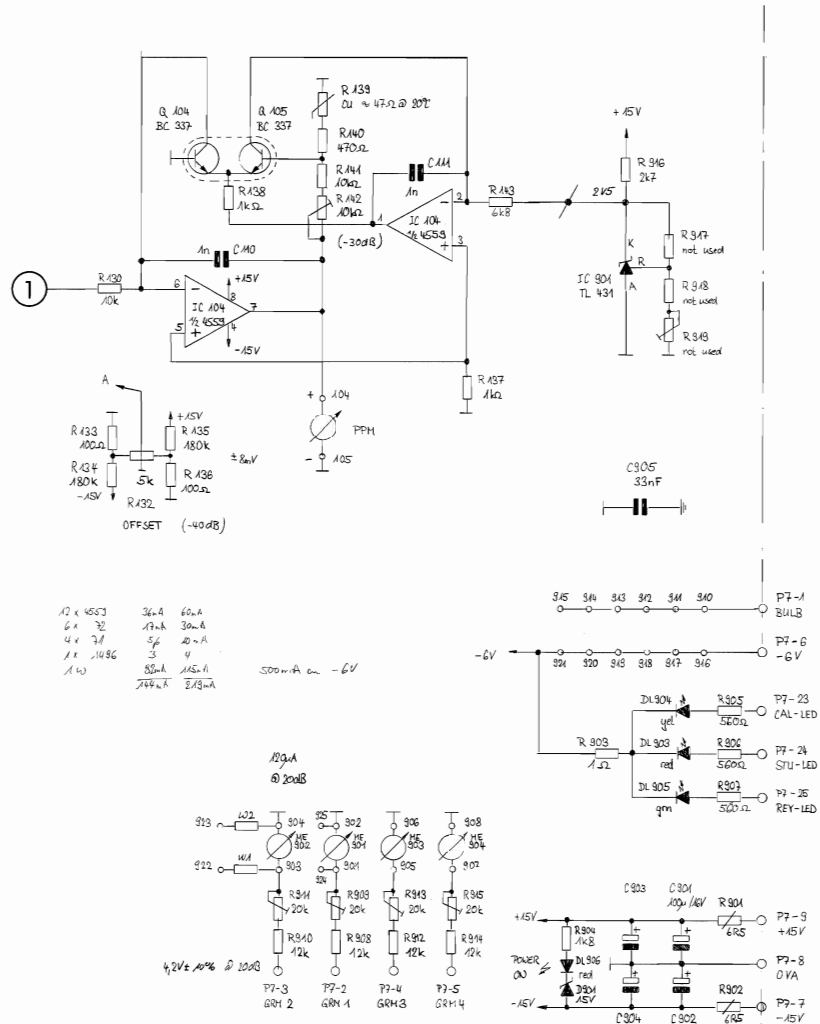
METER PANEL 2 CH 1.961.902-81

Table with columns: Ad., POS., REF.No., DESCRIPTION, MANUFACTURER. It lists various electronic components like resistors, capacitors, and integrated circuits used in a meter panel, including their values, tolerances, and manufacturer details.

METER PANEL 2CH
METER PANEL 4CH

1.961.902-81
1.961.904-81

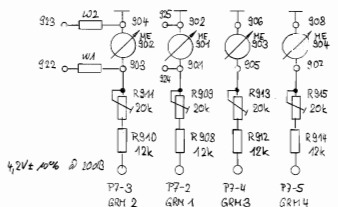
PART 2



12 x 4553	36.4	60.4
6 x 32	13.4	30.4
4 x 37	5.6	20.4
1 x 1486	3	4
1 x	85.4	125.4
	244.4	243.4

500mA @ -6V

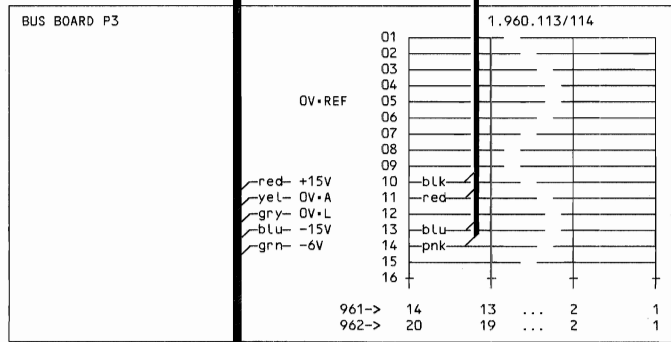
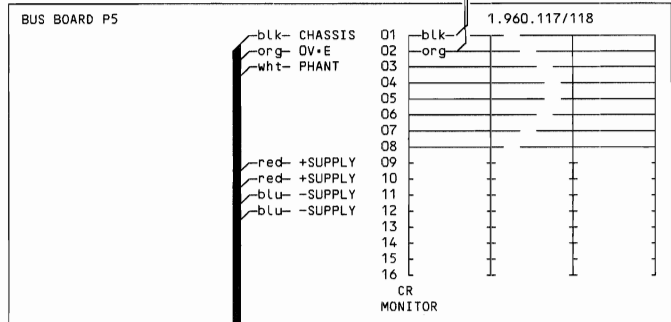
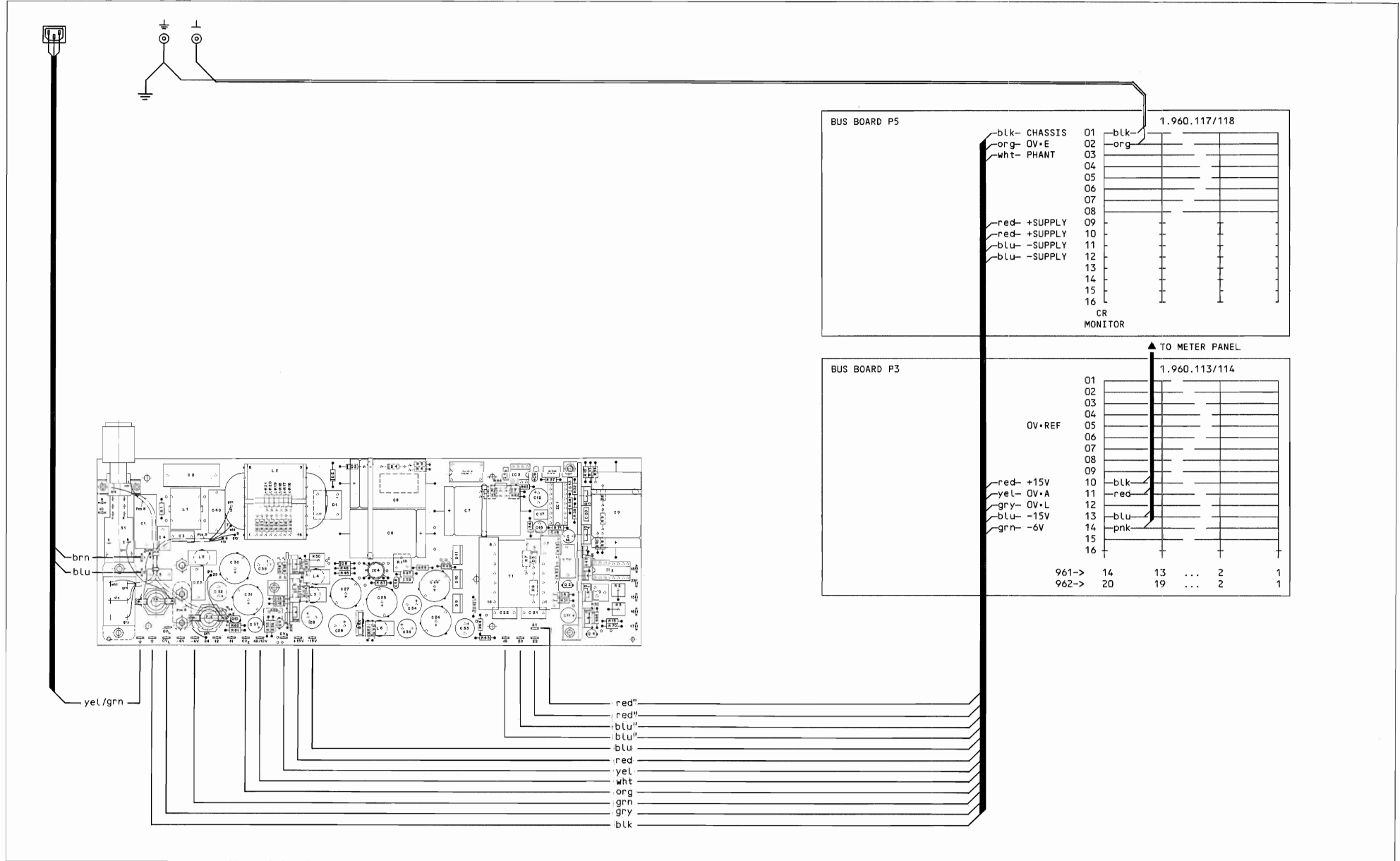
189A @ 20dB



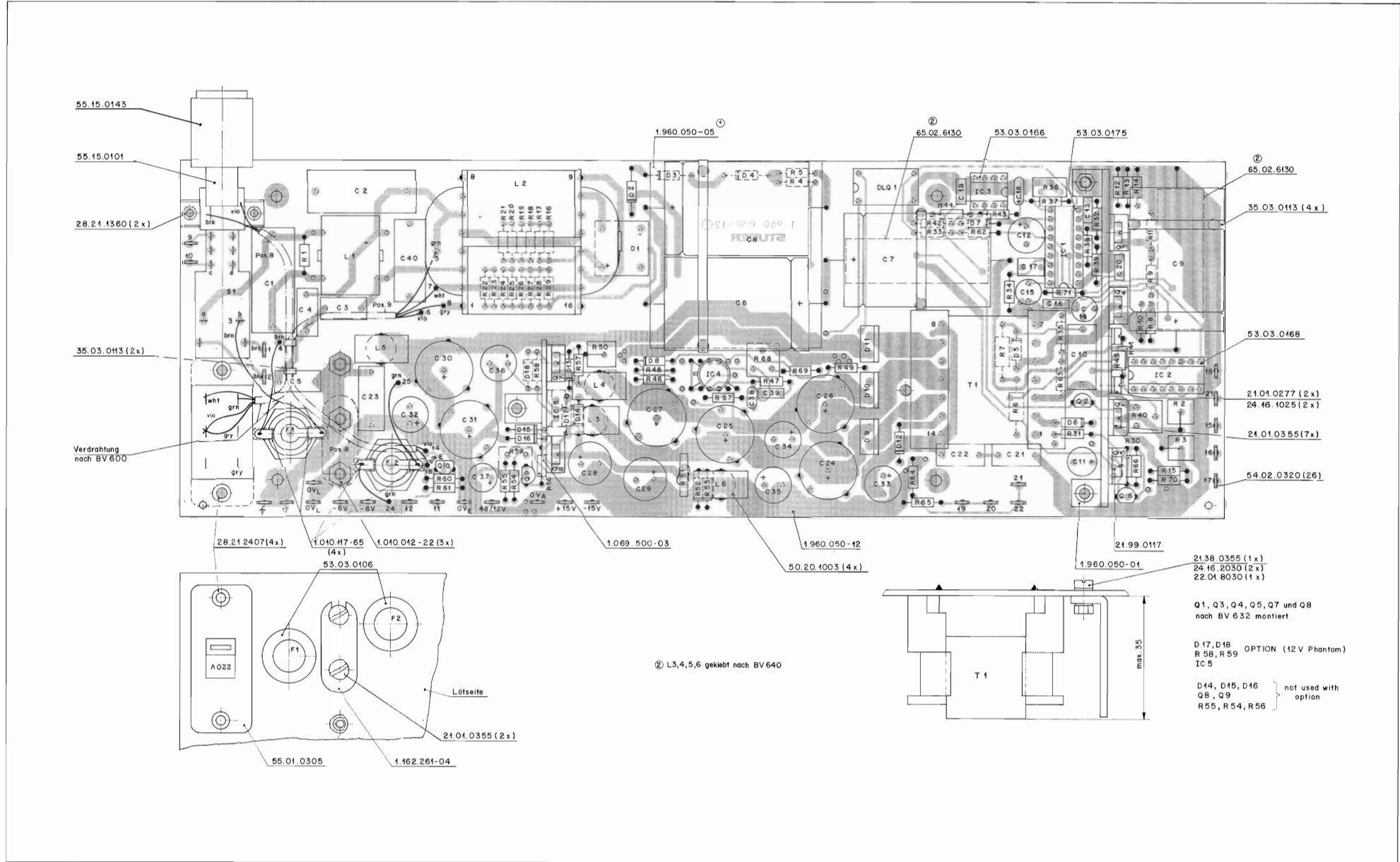
28.11.85 A. Eckert	A. A. 81	20.10.83 7/85		
STUDER	PANEL 961	SC	1.961.902/904.81	

POWER SUPPLY

1.960.050-82

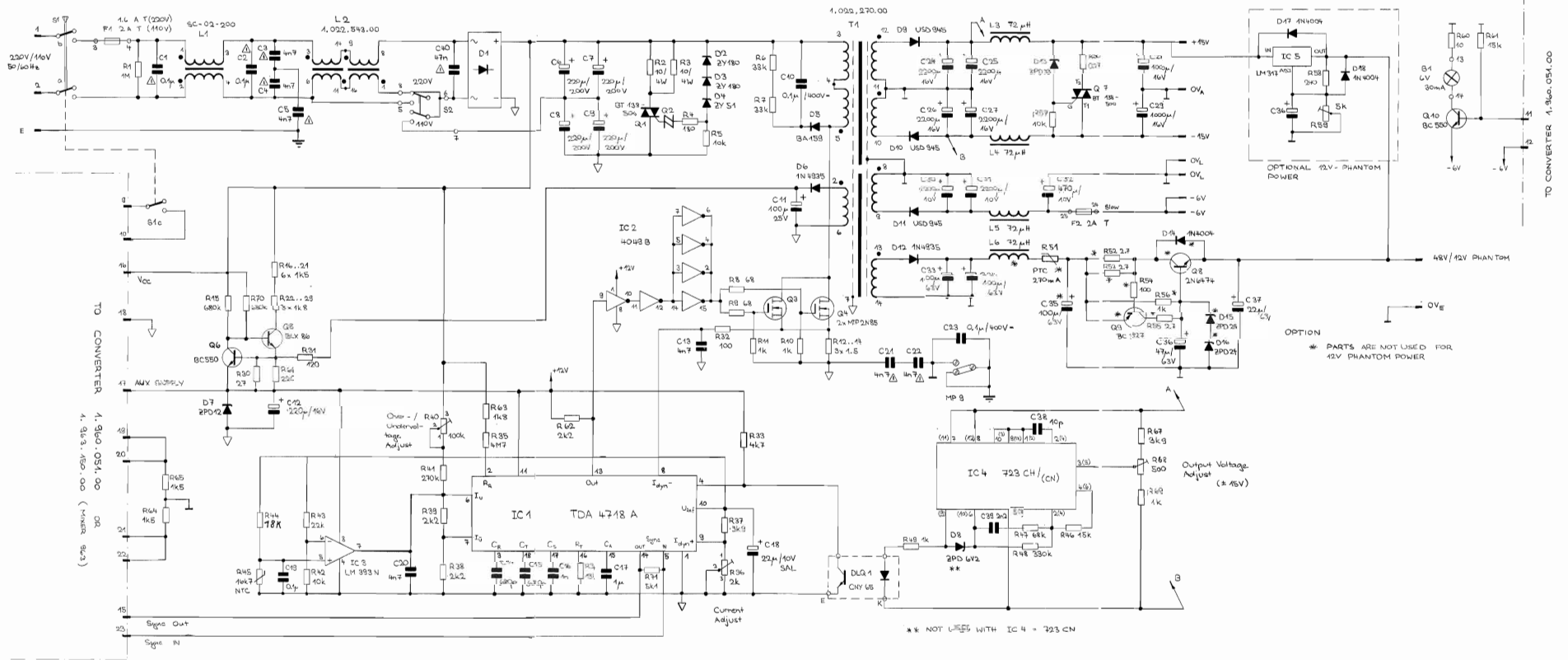


POWER SUPPLY 1.960.050-82



POWER SUPPLY

1.960.050-82



POWER SUPPLY

1.960.050-82

Table with columns: IND., POS.ND., PART NO., VALUE, SPECIFICATIONS / EQUIVALENT, MANUF. Contains component list for power supply 961/962.

S T U D E R (00) 87/10/01 AE POWER-SUPPLY 961/962 PL 1.960.050-82 PAGE 1

Table with columns: IND., POS.ND., PART NO., VALUE, SPECIFICATIONS / EQUIVALENT, MANUF. Contains component list for power supply 961/962.

S T U D E R (00) 87/10/01 AE POWER-SUPPLY 961/962 PL 1.960.050-82 PAGE 2

Table with columns: IND., POS.ND., PART NO., VALUE, SPECIFICATIONS / EQUIVALENT, MANUF. Contains component list for power supply 961/962.

S T U D E R (00) 87/10/01 AE POWER-SUPPLY 961/962 PL 1.960.050-82 PAGE 3

Table with columns: IND., POS.ND., PART NO., VALUE, SPECIFICATIONS / EQUIVALENT, MANUF. Contains component list for power supply 961/962.

S T U D E R (00) 87/10/01 AE POWER-SUPPLY 961/962 PL 1.960.050-82 PAGE 4

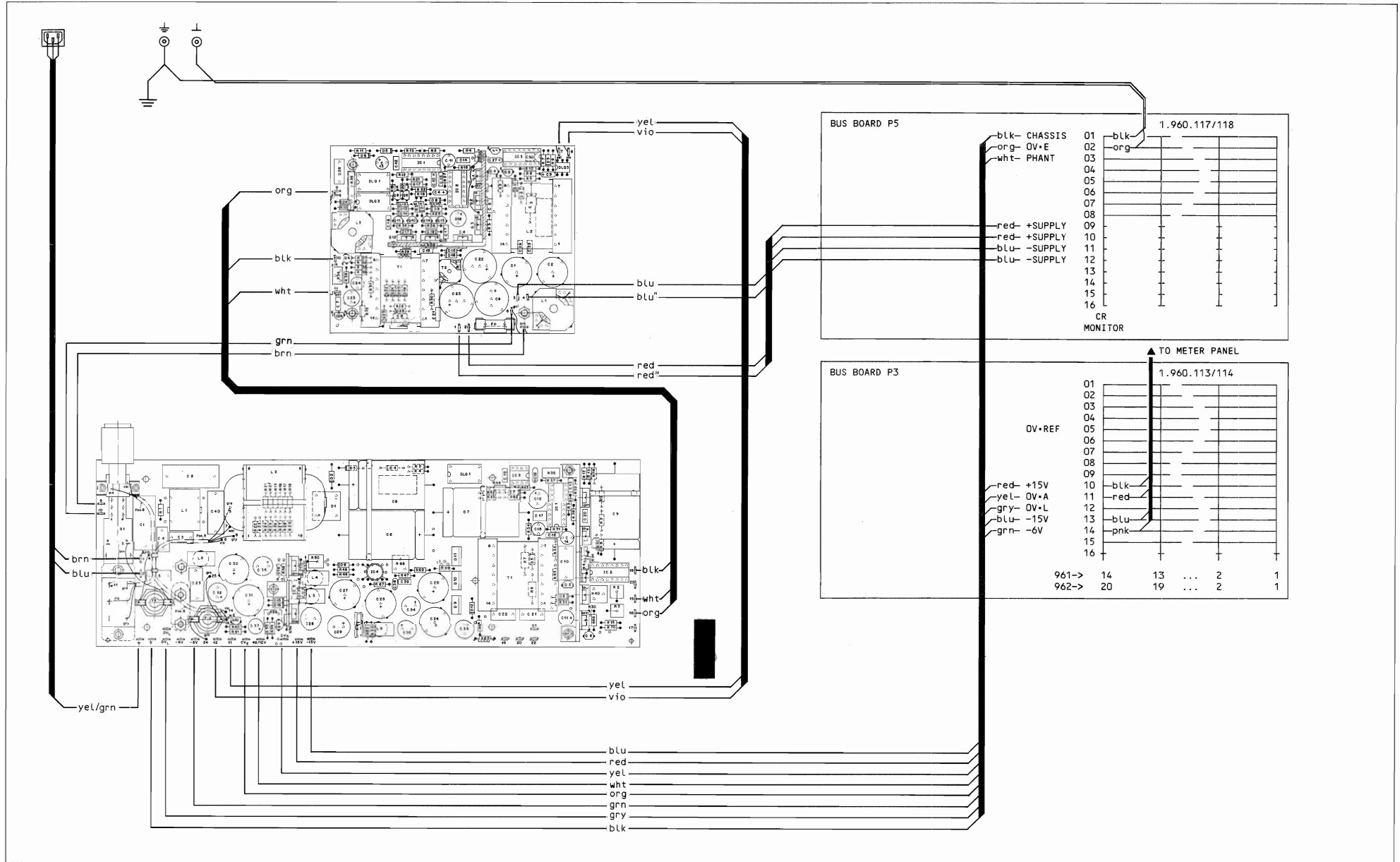
Table with columns: IND., POS.ND., PART NO., VALUE, SPECIFICATIONS / EQUIVALENT, MANUF. Contains component list for power supply 961/962.

S T U D E R (00) 87/10/01 AE POWER-SUPPLY 961/962 PL 1.960.050-82 PAGE 5

Table with columns: IND., POS.ND., PART NO., VALUE, SPECIFICATIONS / EQUIVALENT, MANUF. Contains component list for power supply 961/962.

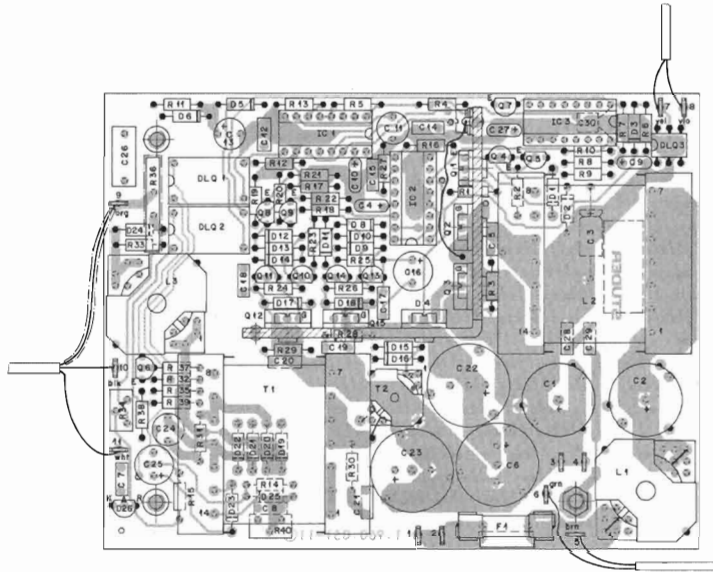
S T U D E R (00) 87/10/01 AE POWER-SUPPLY 961/962 PL 1.960.050-82 PAGE 6

CONVERTER 1.960.051-00



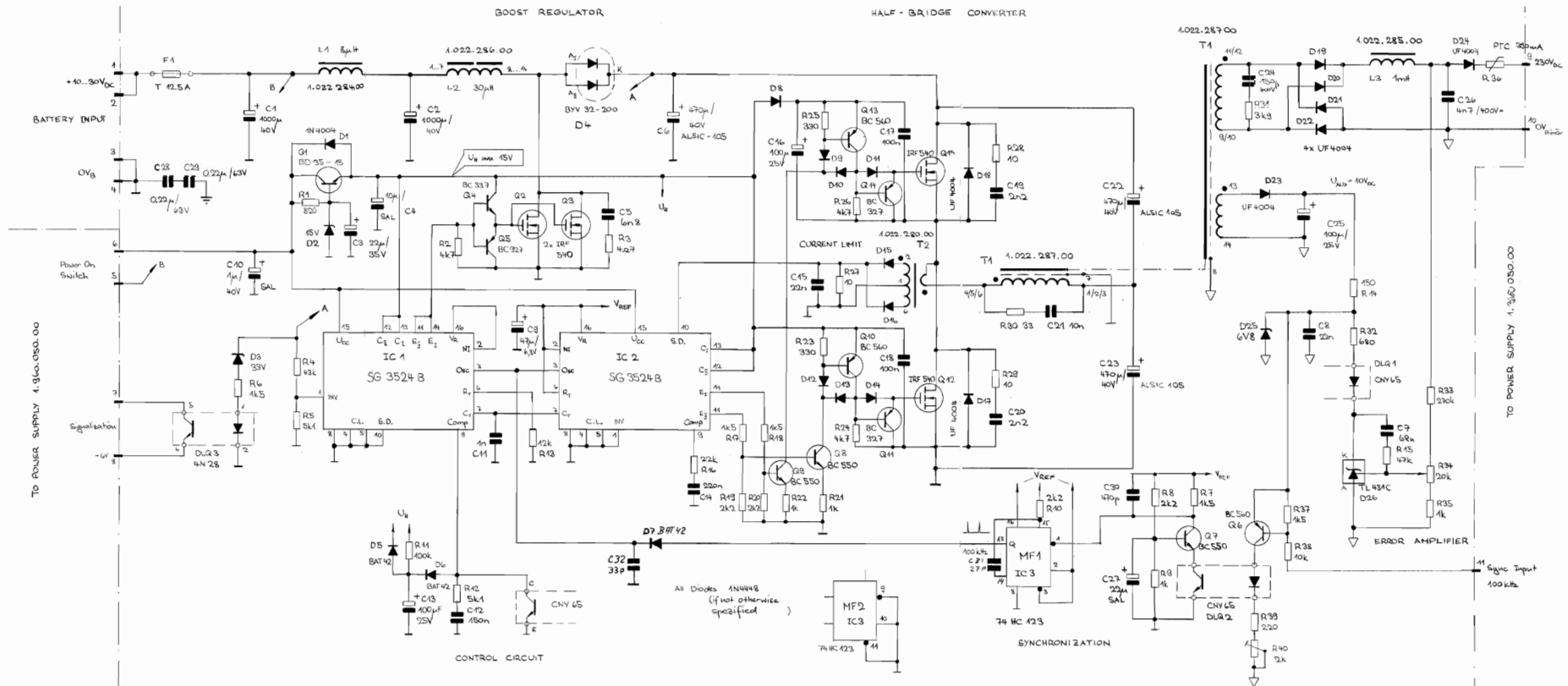
CONVERTER

1.960.051-00



CONVERTER

1.960.051-00



CONVERTER

1.960.051-00

Ad	POS	REF.No.	DESCRIPTION	MANUFACTURER	Ad	POS	REF.No.	DESCRIPTION	MANUFACTURER
C.....1	59.22.6102	1000 uF	-20V	40V EL	R.....3	57.11.3479	4.7 Ohm	1% 0.25W	
C.....2	59.22.6102	1000 uF	10V	40V EL	R.....4	57.11.3483	43 Kohm	1% 0.25W	
C.....3	59.25.3470	47 uF	-20V	25V EL	R.....5	57.11.3512	5.1 Kohm	1% 0.25W	
C.....4	59.26.2100	10 uF	20V	16V SAL	R.....6	57.11.3182	1.5 Kohm	1% 0.25W	
C.....5	59.06.0682	6.8 nF	10V	PE	R.....7	57.11.3192	1.5 Kohm	1% 0.25W	
C.....6	59.99.1701	470 uF	-20V	40V EL High temp,low ESR	02 R.....7	57.11.3222	2.2 Kohm	1% 0.25W	
C.....7	59.06.0683	68 nF	10V	PE	R.....8	57.11.3222	2.2 Kohm	1% 0.25W	
C.....8	59.06.0223	22 nF	10V	PE	R.....9	57.11.3102	1 Kohm	1% 0.25W	
C.....9	59.26.0470	47 uF	20V	6.3V SAL	R.....10	57.11.3222	2.2 Kohm	1% 0.25W	
C.....10	59.26.9109	1 uF	20V	40V SAL	R.....11	57.11.3104	100 Kohm	1% 0.25W	
C.....11	59.05.1102	1 nF	1% 1V	PP	R.....12	57.11.3512	5.1 Kohm	1% 0.25W	
C.....12	59.06.6154	150 nF	10V	PE	R.....13	57.11.3123	12 Kohm	1% 0.25W	
C.....13	59.22.6101	100 uF	-20V	16V EL	R.....14	57.11.3181	150 Ohm	1% 0.25W	
C.....14	59.06.0224	220 nF	10V	PE	R.....15	57.11.3473	47 Kohm	1% 0.25W	
C.....15	59.06.0223	22 nF	10V	PE	R.....16	57.11.3223	22 Kohm	1% 0.25W	
C.....16	59.22.6101	100 uF	-20V	25V EL	R.....17	57.11.3182	1.5 Kohm	1% 0.25W	
C.....17	59.06.0104	100 nF	10V	PE	R.....18	57.11.3182	1.5 Kohm	1% 0.25W	
C.....18	59.06.0104	100 nF	10V	PE	R.....19	57.11.3222	2.2 Kohm	1% 0.25W	
C.....19	59.06.0222	2.2 nF	10V	PE	R.....20	57.11.3222	2.2 Kohm	1% 0.25W	
C.....20	59.06.0222	2.2 nF	10V	PE	R.....21	57.11.3102	1 Kohm	1% 0.25W	
C.....21	59.06.0103	10 nF	10V	PE	R.....22	57.11.3102	1 Kohm	1% 0.25W	
C.....22	59.99.1701	470 uF	-20V	40V EL High temp,low ESR	R.....23	57.11.3331	330 Ohm	1% 0.25W	
C.....23	59.99.1701	470 uF	-20V	40V EL High temp,low ESR	R.....24	57.11.3472	4.7 Kohm	1% 0.25W	
C.....24	59.06.2151	150 pF	2.5V	PE	R.....25	57.11.3331	330 Ohm	1% 0.25W	
C.....25	59.22.6101	100 uF	-20V	25V EL	R.....26	57.11.3472	4.7 Kohm	1% 0.25W	
C.....26	59.14.0472	4.7 nF	10V	400V PE	R.....27	57.11.3100	10 Ohm	1% 0.25W	
C.....27	59.26.1220	22 uF	20V	10V SAL	R.....28	57.11.3100	10 Ohm	1% 0.25W	
C.....28	59.06.0224	220 nF	10V	PE	R.....29	57.11.3100	10 Ohm	1% 0.25W	
C.....29	59.06.0224	220 nF	10V	PE	R.....30	57.11.3330	33 Ohm	1% 0.25W	
C.....30	59.32.4471	470 pF	20V	CER	R.....31	57.11.1392	3.9 Kohm	1% 0.25W	
01 C.....31	59.34.2270	27 pF	20V	CER	R.....32	57.11.3681	680 Ohm	1% 0.25W	
01 C.....32	59.34.2330	33 pF	20V	CER	R.....33	57.11.4274	270 Kohm	1% 0.25W	
D.....1	50.04.0106	1M4004		Not,G1	R.....34	58.01.9203	20 Kohm	10% var. resistor	
D.....2	50.04.1119	2 15V	400mW	Ses,ITT	R.....35	57.11.3102	1 Kohm	1% 0.25W	
D.....3	50.04.1127	2 15V	400mW	Ses,ITT	R.....36	57.92.2391	5 Ohm	PTC 390 mA, 266V	Ph
D.....4	50.04.0517	BYJ 32	200V 20A	Not,Pa	R.....37	57.11.3182	1.5 Kohm	1% 0.25W	
D.....5	50.04.0127	BAT 42	Schottky Diode	any	R.....38	57.11.3103	10 Kohm	1% 0.25W	
D.....6	50.04.0127	BAT 42	Schottky Diode	any	R.....39	57.11.3221	220 Ohm	1% 0.25W	
D.....7	50.04.0127	BAT 42	Schottky Diode	any	R.....40	58.01.9202	2 Kohm	10% var. resistor	
D.....8	50.04.0125	1N4448		any	T.....1	1.022.287.00		switching power transformer	St
D.....9	50.04.0125	1N4448		any	T.....2	1.022.280.00		current transformer	St
D.....10	50.04.0125	1N4448		any					
D.....11	50.04.0125	1N4448		any					
D.....12	50.04.0125	1N4448		any					
D.....13	50.04.0125	1N4448		any					
D.....14	50.04.0125	1N4448		any					
D.....15	50.04.0125	1N4448		any					
D.....16	50.04.0125	1N4448		any					
D.....17	50.04.0138	UF 4004	400V, 1A	G1					
D.....18	50.04.0138	UF 4004	400V, 1A	G1					
D.....19	50.04.0138	UF 4004	400V, 1A	G1					
D.....20	50.04.0138	UF 4004	400V, 1A	G1					
D.....21	50.04.0138	UF 4004	400V, 1A	G1					
D.....22	50.04.0138	UF 4004	400V, 1A	G1					
D.....23	50.04.0138	UF 4004	400V, 1A	G1					
D.....24	50.04.0138	UF 4004	400V, 1A	G1					
D.....25	50.04.1102	2 6.8V	400mW	Ses,ITT					
D.....26	50.10.0106	TL 431C	Shunt regulator	Not,T1					
DLQ.....1	50.04.2148	CWV 65	IEC 65						
DLQ.....2	50.04.2148	CWV 65	IEC 65						
DLQ.....3	50.99.0126	4N 28							
F.....1	51.01.0128		T 12.5A/250V 5*20						
IC.....1	50.05.0279	SG 3524B	SMPS Control IC	SG					
IC.....2	50.05.0279	SG 3524B	SMPS Control IC	SG					
IC.....3	50.17.1123	74HC 123	Dual Monostable Multivibrator	any					
L.....1	1.022.284.00	8 uH	RF - suppression choke	St					
L.....2	1.022.285.00	30 uH		St					
L.....3	1.022.285.00	1 mH		St					
MP.....1	53.03.0168	3 pcs	IC-socket 16 pin						
MP.....2	1.960.051.11	1 pcs	Power-Supply-PCB						
MP.....3									
MP.....4	53.02.0142	2 pcs	Fuse holder clip						
MP.....5	54.02.0320	11 pcs	Flachstecker 2.8						
MP.....6	50.20.0310	1 pcs	Glilmer gefettet TO 126						
MP.....7	50.20.0313	5 pcs	Glilmer gefettet TO 220						
Q.....1	50.03.0495	B0135-16		Tf,Ph					
Q.....2	50.03.1509	IRF 540	NOS Power FET 100V 19A	IR,Not					
Q.....3	50.03.1509	IRF 540	NOS Power FET 100V 19A	IR,Not					
Q.....4	50.03.0340	BC 327	NPN	Not					
Q.....5	50.03.0351	BC 327	PNP	Not					
Q.....6	50.03.0496	BC 560	PNP IC>100mA, B=200	any					
Q.....7	50.03.0497	BC 550	NPN IC>100mA, B=200	any					
Q.....8	50.03.0497	BC 550	NPN IC>100mA, B=200	any					
Q.....9	50.03.0497	BC 550	NPN IC>100mA, B=200	any					
Q.....10	50.03.0496	BC 560	PNP IC>100mA, B=200	any					
Q.....11	50.03.0351	BC 327	PNP	Not					
Q.....12	50.03.1509	IRF 540	NOS Power FET 100V 19A	IR,Not					
Q.....13	50.03.0496	BC 560	PNP IC>100mA, B=200	any					
Q.....14	50.03.0351	BC 327	PNP	Not					
Q.....15	50.03.1509	IRF 540	NOS Power FET 100V 19A	IR,Not					
R.....1	57.11.3821	820 Ohm	1% 0.25W						
R.....2	57.11.3472	4.7 Kohm	1% 0.25W						

(01) 86/07/07 Improved synchronization capability with
new ICI/2: IP 3524B

(02) 91/01/14 duty-cycle adjust R7

CE=Ceramic, CF=Carbon Film, EL=Electrolytic, MF=Metal Film,
PE=Polyester, PP=Polypropylen, PS=Polystyrol

MANUFACTURER: Bu=Burndy, Ex=Exar, Fc=Fairchild, G1=General Instrument
HP=Hewlett Packard, ITT=Intertechnical, Mot=Motorola, Nat=N
(Natsusita), NS=National Semiconductors, Ph=Philips,
Ra=Raytheon, Sig=Signetics, Six=Siliconix, St=Studer,
TI=Texas Instrument, Ste=Siemens, Is=Intersil, Un=Unitro

1.960.051.00 CONVERTER 961/962 NGA85/12/2000

1.960.051.00 CONVERTER 961/962 NGA86/07/0701

1.960.051.00 CONVERTER 961/962 PF 91/01/1402

END

7. ERSATZTEILE

INHALT	SEITE
7.1 Chassis	7/2
7.2 Instrumententräger 961	7/4
7.3 Instrumententräger 962	7/4
7.4 Einschübe	7/6
7.5 Dreh - und Druckknöpfe	7/8
7.6 Fader Pflegekit	7/8
7.7 Flachbahnregler	7/9

7. SPARE PARTS

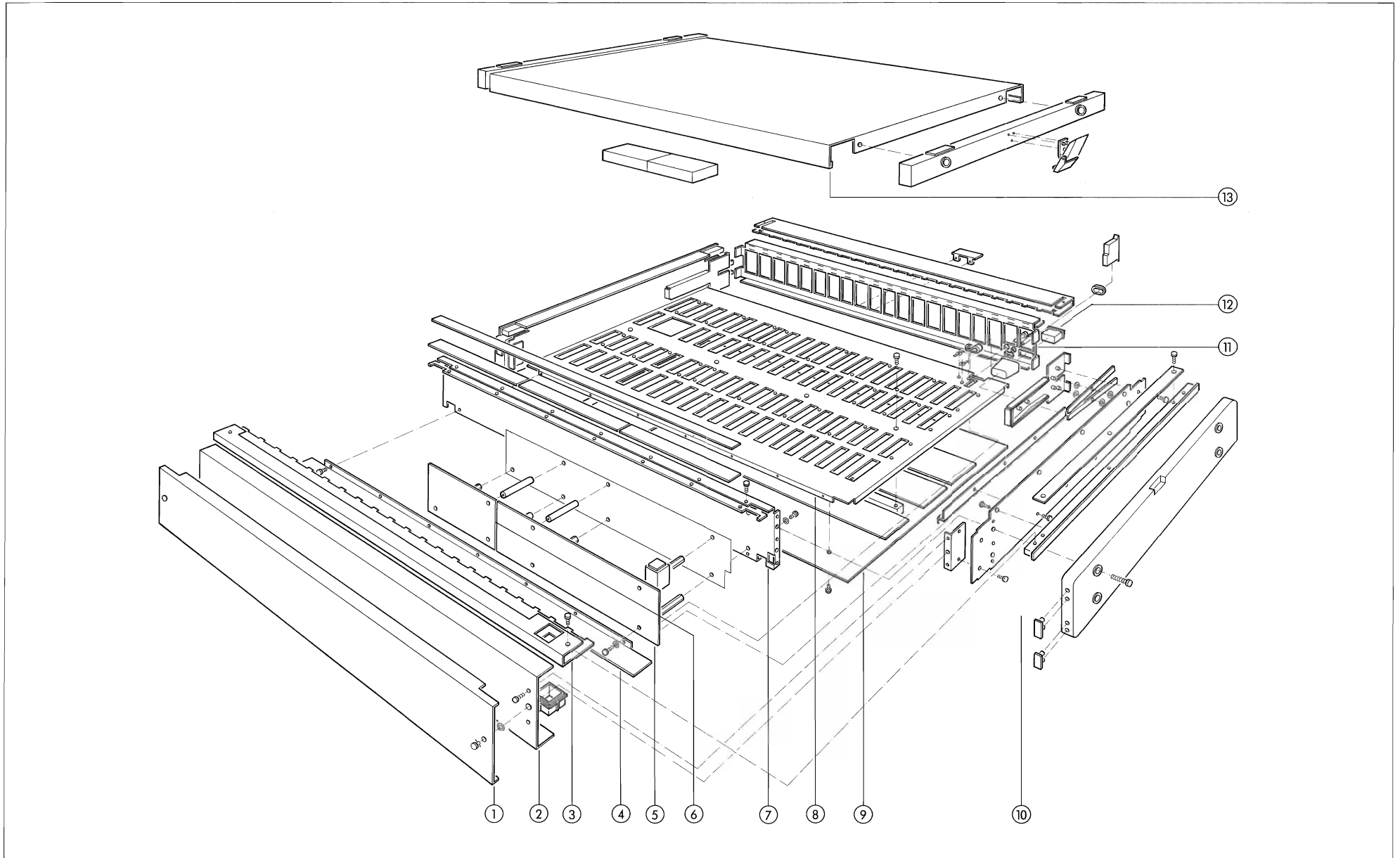
CONTENTS	PAGE
7.1 Chassis.....	7/2
7.2 Meter Panel 961.....	7/4
7.3 Meter Panel 962.....	7/4
7.4 Moduls.....	7/6
7.5 Knobs and Push Buttons.....	7/8
7.6 Fader Maintenance Kit.....	7/8
7.7 Fader.....	7/9

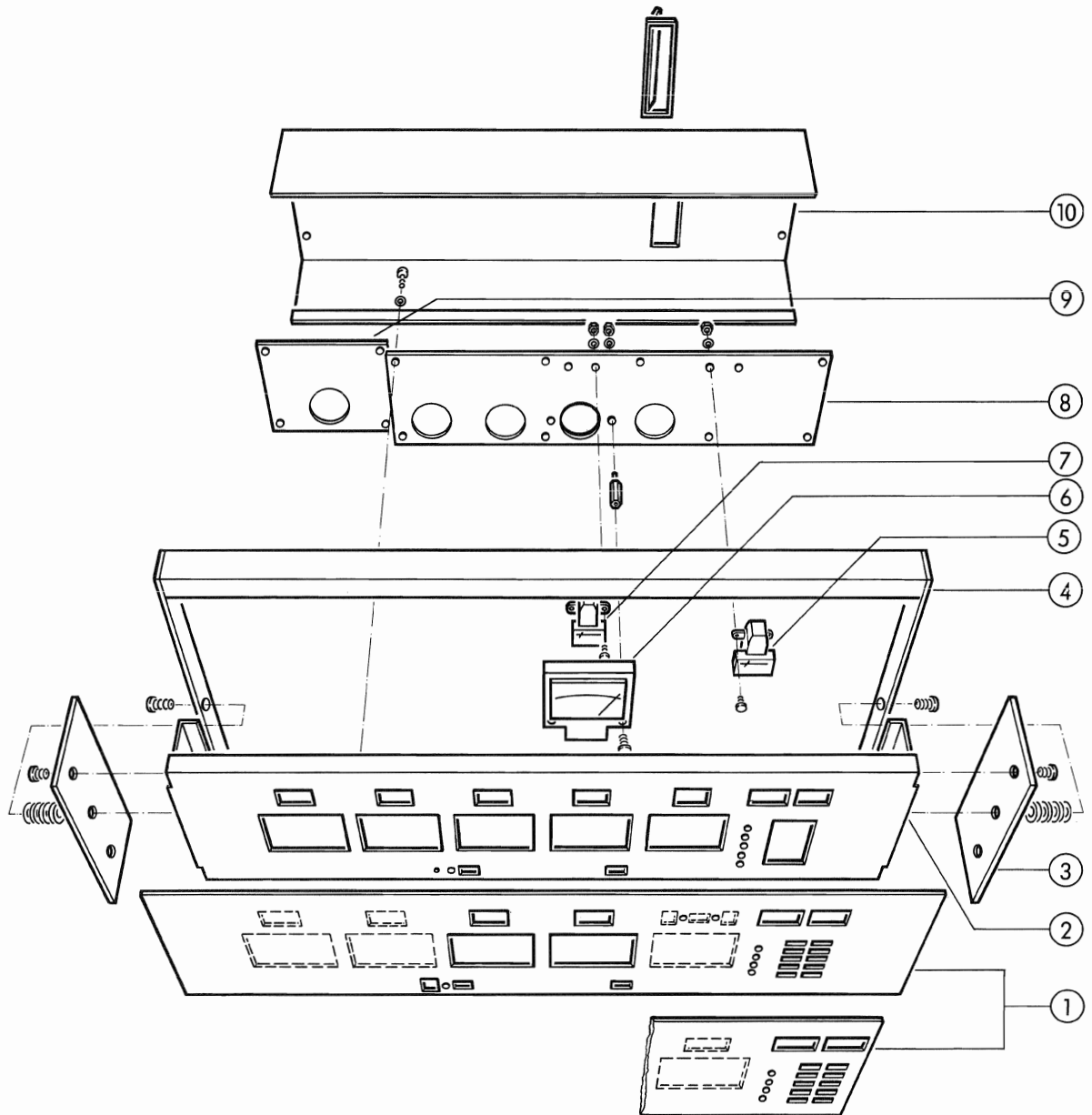
7.1 CHASSIS

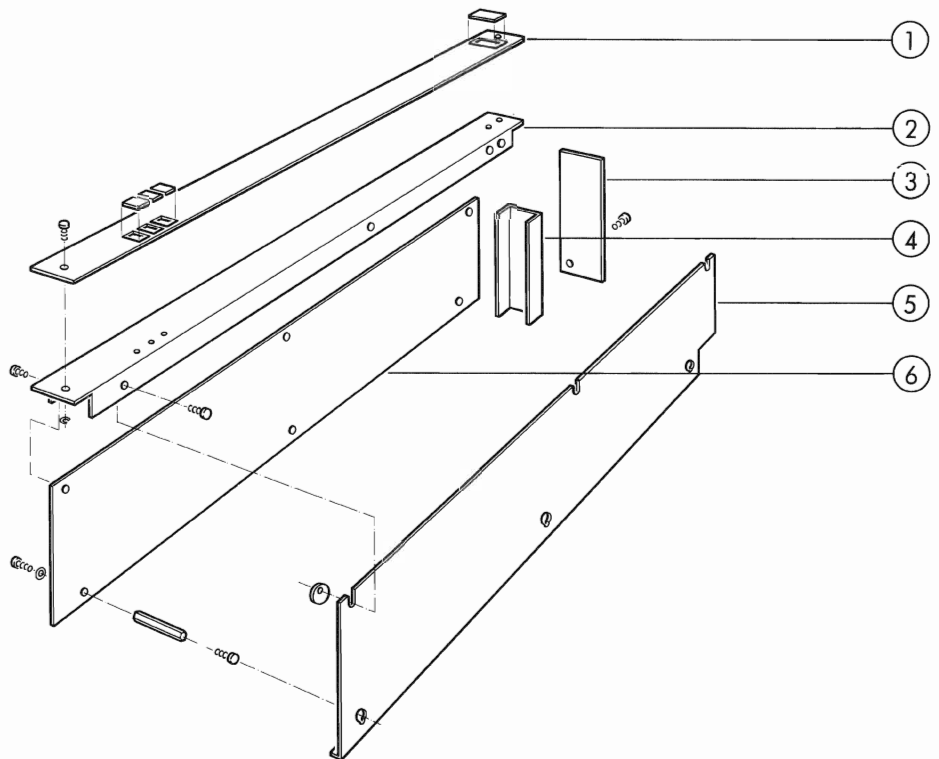
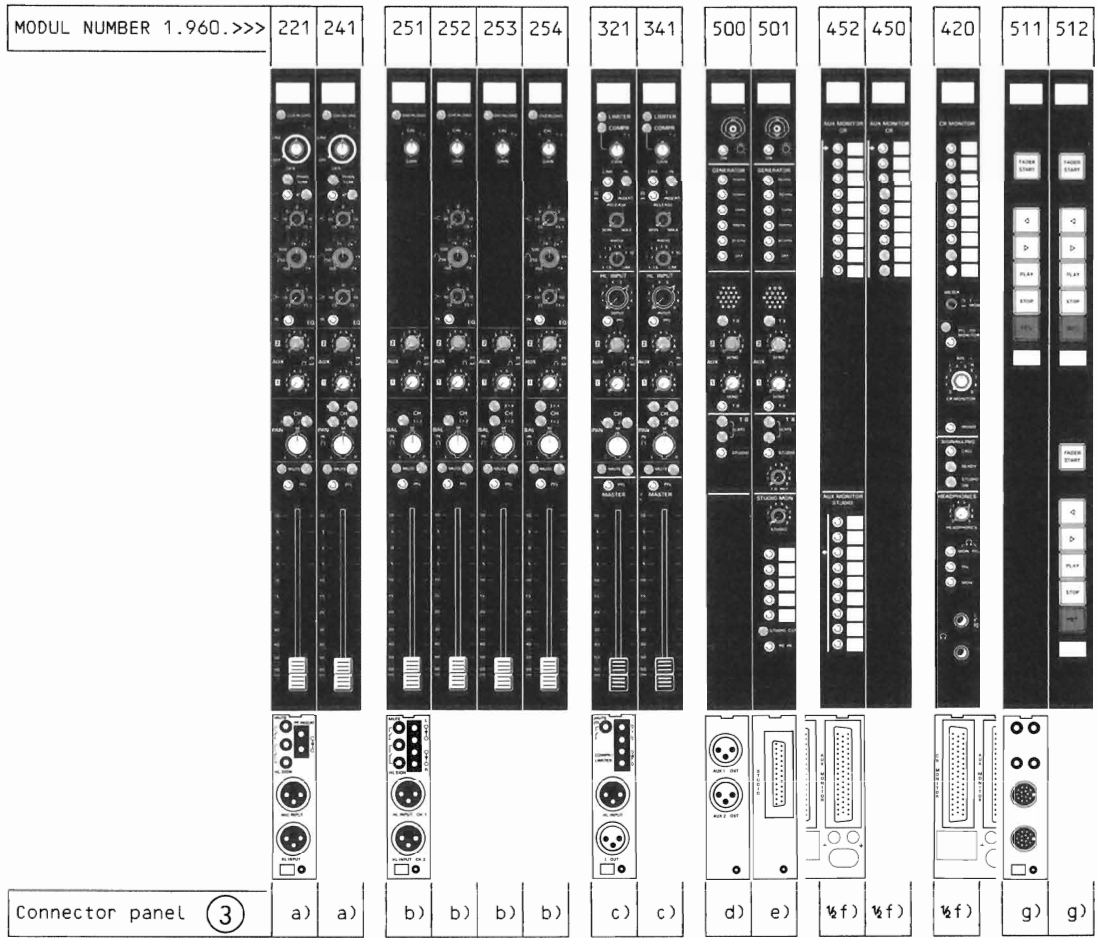
	ORDER NUMBER	PART NAME	CONSOLE VERSION: 961 962	
01	1.961.001.07	Front cover	1	1
	1.962.001.07	Front cover	2	2
	33.02.0110] Snap closures {	2	2
	33.02.0180		2	2
	1.010.027.23		2	2
02	1.961.001.20	Power supply shock protection	1	
	1.962.001.20	Power supply shock protection		1
	21.26.2353	Philips screws M3x5	4	4
03	1.961.001.05	End cover strip, front	1	1
	1.962.001.05	End cover strip, front	2	2
	21.99.0175	Countersunk-head Allen scr. M3x6	2	2
	1.961.001.01	Key guide	1	1
04	1.961.001.18	Front bottom trim strip	1	1
	1.962.001.18	Front bottom trim strip		1
	21.26.2354	Countersunk-head Phil. scr. M3x6	5	7
05	1.960.050.81	Power supply	1	1
	1.010.027.27	Spacer stud, hex head ... M3x35	3	3
	1.961.001.31	Spacer stud, nylon M3x35	1	1
	21.26.0354	Countersunk-head Phil. scr. M3x6	8	8
	24.16.1030	Lock washer	8	8
	1.961.001.29	Insulating foil	1	1
06	1.960.051.00	Converter	Option	1
	1.010.027.27	Spacer stud, hex head ... M3x35	1	1
	1.961.001.31	Spacer stud, nylon M3x35	2	2
	21.01.0354	Slotted-head screws M3x6	5	5
	21.99.0117	Slotted-head screw, nylon M3x6	1	1
	24.16.1030	Lock washers	6	6
07	1.961.001.02	Chassis front plate	1	
	1.962.001.02	Chassis front plate		1
	21.26.2353	Countersunk-head Philips scr.	2x3	2x3
	1.961.001.17	Marking strip, glued	1	
	1.962.001.17	Marking strip, glued		1
	1.961.001.32	Intermediate layers, glued ...	2	3
	1.961.001.04	Module retaining strip	1	
	1.962.001.04	Module retaining strip		1
	21.26.2353	Countersunk-head screws .. M3x5	5	7
08	1.961.001.01	Bus carrier	1	
	1.962.001.01	Bus carrier		1
	1.961.001.19	Traverse (square alu rod)	1	
	1.962.001.19	Traverse (square alu rod)		1
	21.26.0354	Philips screws M3x6	4	4
	24.16.1030	Lock washers	4	4
	1.960.113.00	Bus board P3	1	1
	21.26.0354	Philips screws M3x6	10	10
	24.16.1030	Lock washers	10	10
	1.960.114.00	Bus board P3		1
	21.26.0354	Philips screws M3x6	6	6
	24.16.1030	Lock washers	6	6
1.960.115.00	Bus board P4	1	1	
21.26.0354	Philips screws M3x6	6	6	
24.16.1030	Lock washers	6	6	
1.960.117.00	Bus board P5	1	1	
21.26.0354	Philips screws M3x6	8	8	
24.16.1030	Lock washers	8	8	
1.960.118.00	Bus board P5		1	
21.26.0354	Philips screws M3x6	6	6	
24.16.1030	Lock washer	6	6	

	ORDER NUMBER	PART NAME	CONSOLE VERSION: 961 962	
09	1.961.001.08	Bottom cover	1	
	1.962.001.08	Bottom cover		1
	1.010.025.21	Allen screws	11	15
10	1.961.001.21	Side panel	L=R	2
	21.26.2353	Philips screws M3x5	2x9	2x9
	1.961.001.27	Bracket for front panel ... L=R	2	2
	21.26.2353	Philips screws M3x5	2x2	2x2
	1.961.001.26	Power cord guide	1	1
	21.26.2353	Philips screws M3x6	3	3
	1.961.001.22	Lateral edge strips	L=R	2
	21.53.0455	Allen screws M4x8	2x4	2x4
	24.16.1040	Lock washer	2x4	2x4
	1.961.001.24	Cover strip	L=R	2
21.99.0175	Allen screws M3x6	2x2	2x2	
1.961.097.00	Wooden side panels	L=R	2	2
	21.26.2353	Allen screws	2x4	2x4
	1.067.010.08	Mar protection inserts, glued	2x6	2x6
		Handle lock assembly	2	2
1.169.100.23	Pair of tongs	2x1	2x1	
1.961.001.23	Cover	2x1	2x1	
21.26.2353	Spring	2x1	2x1	
1.062.210.11	Spacer washer	2x4	2x4	
21.26.2353	Philips screw	M3x5	2x7	
11	1.961.001.03	Rear panel	1	
	1.962.001.03	Rear panel		1
	21.26.2352	Philips screws M3x5	4	7
	1.961.001.04	Module retaining strip	1	
	1.962.001.04	Module retaining strip		1
	21.26.2353	Philips screws M3x5	5	7
	1.961.001.69	Socket marking label	1	1
	1.961.001.28	Holder for panel connector ...	1	1
	1.961.001.06	End strip, rear	1	
	1.962.001.06	End strip, rear		1
21.99.0175	Allen screws M3x6	2	2	
12		Power/Panel/Ground connectors		
	54.42.0002	Power inlet	1	1
	1.961.001.69	Shock protection for pow. inl.	1	1
	54.01.0105	Ground socket, black	1	1
	54.01.010	Ground socket, yellow	1	1
	1.961.096.00	Panel cable, D-type connector	1	1
	31.01.0104	Edge protector for cable	1	1
	35.05.0313	Strain relief clamp	1	1
	21.26.0354	Philips screw	1	1
	24.16.1030	Lock washer	1	1
13	1.961.098.00	Carrying case lid	1	
	1.962.098.00	Carrying case lid		1
	1.961.001.51	Wooden side panels	L=R	2
	21.26.2353	Allen screws	2x2	2x2
	1.067.010.08	Mar protection inserts, glued	2x2	2x2
	33.01.0102	Snap closures	L=R	2
	20.28.1326	Philips wood screws	2x3	2x3
	89.01.0216	Spare parts box	2	2

L=R: LEFT ≡ RIGHT

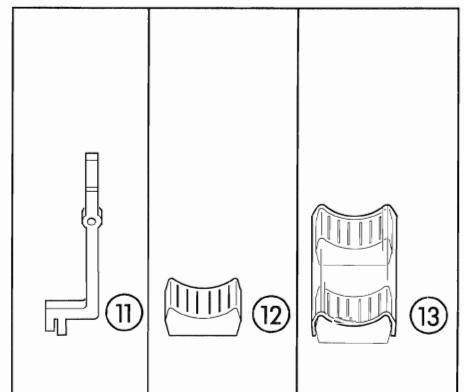
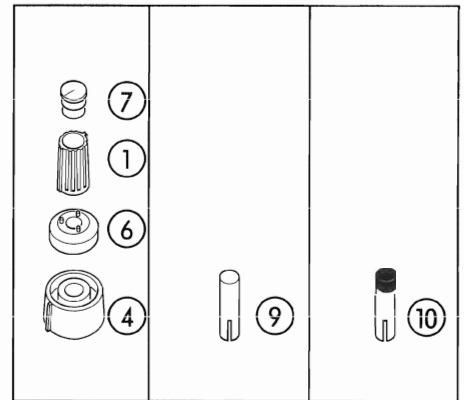
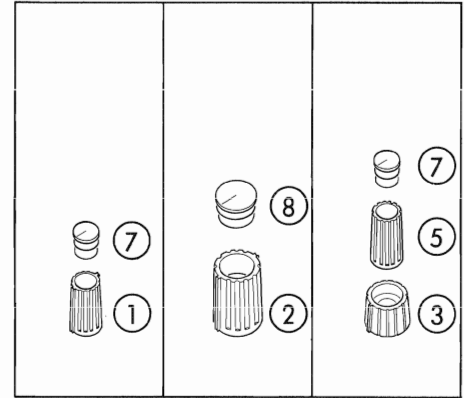






7.5 KNOBS / PUSH BUTTONS

Ind.	ORDER NUMBER	PART NAME	COLOR
01	42.01.0228	Wing knob.....Ø10/4	dark grey
02	42.01.0233Ø15/4	dark grey
03	1.912.000.03Ø13/6.2	light grey
04	1.189.001.47	light grey
05	42.01.0203	Knob.....Ø10/4	dark grey
06	42.01.0227	Pointer dial.....	dark grey
07	42.01.0250 42.01.0251 42.01.0252 42.01.0253 42.01.0254 42.01.0255 42.01.0256	Cap with line.....Ø10	light grey dark grey black red blue yellow green
08	42.01.0257 42.01.0258 42.01.0259 42.01.0260 42.01.0261 42.01.0262 42.01.0263	Cap with line.....Ø15	light grey dark grey black red blue yellow green
09	1.810.320.02 1.810.320.03 1.810.320.04 1.810.320.05 1.810.320.06 1.810.320.07	Push button.....	dark grey blue yellow white green red
10	1.011.094.02 1.011.094.03 1.011.094.04 1.011.094.05 1.011.094.06 1.011.094.08	Push button with cap.....	red orange yellow green blue light grey
11	1.011.094.10	Switch elongation	
12	1.911.000.33 1.911.000.34 1.911.000.35 1.911.000.36 1.911.000.38 1.911.000.39	Fader knob.....	orange yellow green blue light grey white
13	1.911.000.07	Fader bridge.....	transparent



7.6 FADER PFLEGERIT

Eine ausführliche Beschreibung der Faderpflege ist als separate Service Information unter der Bestellnummer 10.85.7120 erhältlich.

Das Studer Faderpflege Kit enthält alle notwendigen Utensilien und Flüssigkeiten für eine fachgerechte Faderpflege sowie die oben erwähnte Service Information. Erhältlich unter der Bestellnummer 20.020.001.75.

7.6 FADER MAINTENANCE KIT

A full description of fader maintenance is given in a separate service information booklet. Order number: 10.85.7120

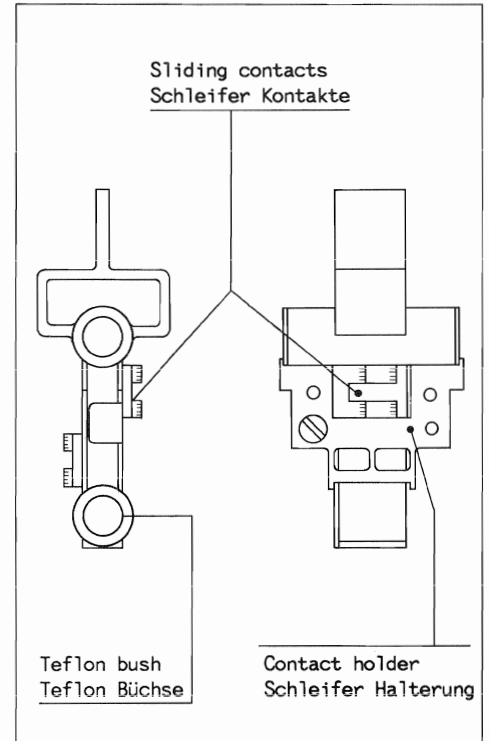
A complete fader maintenance kit containing all necessary chemicals, cleaning aids and the service information mentioned above is available under order number 20.020.001.75

7.7 FADER

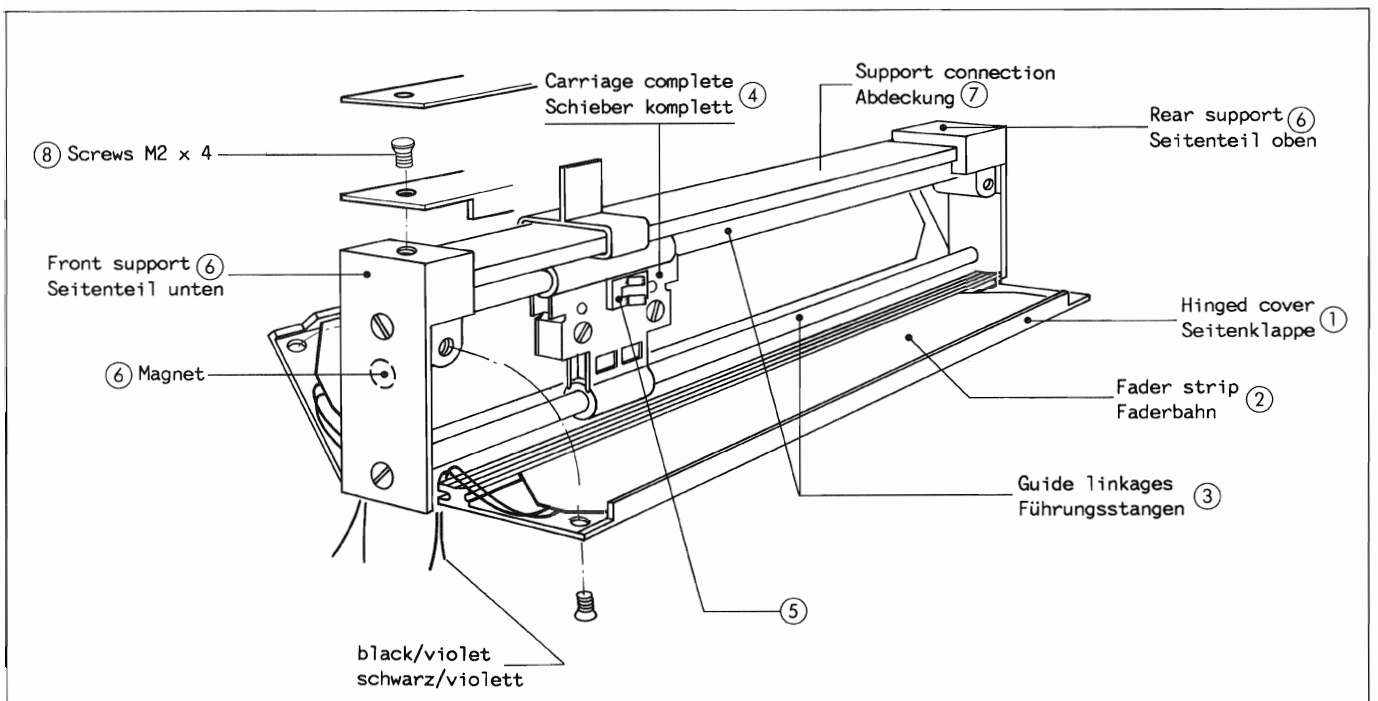
1.960.011.00 Mono Fader complete

1.960.012.00 Stereo Fader complete

Ind.	ORDER NUMBER	SPARE PART		
01	1.960.001.06 21.01.2202	Hinged Cover.....	2	2
		Countersunk-head screws.....	4	4
02	1.960.010.01 1.960.010.02	Fader strip with connection wire	2x1	1
		Fader strip with connection wire		
03	1.960.001.05 21.01.2202 31.05.0003	Guide linkage.....	2	2
		Countersunk-head screws.....	4	4
		O-rings.....	2	2
04	1.960.008.00 1.960.001.01 1.960.001.04	Carriage complete	1	1
		Carriage		
		Sliding bearing bush.....		
05	1.960.009.00 1.960.001.07 21.01.2202	Sliding contact	2	2
		Sliding contact holder.....	2	2
		Countersunk-head screws.....	2	2
06	1.960.001.02 61.03.0106	Support..... front/rear	2	2
		Permanent magnet..... (front)	1	1
07	1.960.001.03	Support connection.....	1	1
08	21.99.0175	Countersunk-head screws..... M2x4	2	2



The complete carriage (1.960.008.00)



The complete fader